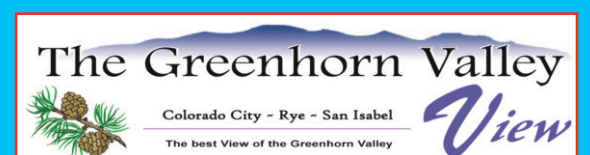


Free

# 2019 GREENHORN VALLEY



*Hiking ~ Camping  
Arts ~ Dining ~ Lodging  
Events*



# History of the Greenhorn Valley



By Cheryl Johnson Huban  
Greenhorn Valley View

Archibald Metcalf, Bill New and Marcelino Baca used the area near the crossing of the Taos Trail with Greenhorn Creek as a hunting camp for several seasons in the early 1840's. In 1845 John Brown opened a store somewhere near Greenhorn Creek, although the location has not been located definitively.

In January of 1847, George Ruxton, an English Adventurer wrote a description of the Greenhorn settlement: "on a bluff overlooking the stream I had the satisfaction of seeing two or three Indian lodges and one adobe hovel of a more aspiring order."

Later in 1847, John Albert arrived at what he called a small settlement on Greenhorn Creek after "a long hard ride from

Taos. Before collapsing he whispered of the murder of Governor Bent and Lee, the Indian uprising and of being the only survivor of the massacre of Turley's mill."

When gold was discovered in California most of the earliest settlers in the Greenhorn Valley joined the Gold Rush west. When the Hicklins arrived to claim their portion of the Cornelio Vigil and Ceran St. Vrain Land

## Table of Contents

History of the Greenhorn Valley ..... 2  
 The St. Charles River .... 3  
 Frontier Pathways Scenic Byway & The  
 The Taos Trail ..... 5  
 St. Charles Natural Arch Hike ..... 7  
 Beekeeping in Southern Colorado ..... 8  
 Delicious Dining Choices in the  
 Greenhorn Valley..... 10  
 Remarkable Hollydot Golf Course ..... 11  
 Fifth Annual Lions Club Car Show and  
 Craft Fair ..... 12  
 Colorado City Parks & Recreation ... 12  
 Hiking the Greenhorn Mountain Trail 13  
 Beulah Summer Events ..... 13  
 Take Time to Fish the Greenhorn Valley  
 Lakes ..... 15  
 Beautiful Lake Beckwith ..... 16  
 Flyfishing - a Colorado Favorite ..... 16  
 Rye Colorado City Saddle Club ..... 17  
 Kayak, Camp and Hike at Nearby Lake  
 Isabel ..... 17  
 Ophir Creek & Area Campgrounds .... 18  
 Experience the Graneros Gorge ..... 19  
 Festival, Festivals & More Festivals .... 20  
 Art of the Car this Summer at the Arts  
 Center ..... 21  
 Bishops Castle ..... 22  
 The Wet Mountains ..... 22  
 Great Sand Dunes National Park ..... 23  
 Summer Events at the Historical Pueblo  
 Riverwalk ..... 24

Grant the Valley was mostly deserted.

Once the Hicklins settled in the Valley, the area around their home became known as the Hicklin Settlement and although early maps show the settlement of Greenhorn in various spots, that name eventually became associated with George Sears' settlement five miles to the

south and later became the Fossceco's Shady Greenhorn.

After the Civil War, families began heading west lured by the Homestead Act. In December of 1871, the Pueblo Chieftain reported 35 families had settled in the Greenhorn Valley.

Scott and Cindy Swartwood, Owners  
(719)676-3348

4493 Bent Bros. Blvd.  
Colorado City  
Mon-Sat  
7:30am 8:30pm  
Sun  
9am- 8:30pm

## Valley Market

~ TAKE EXIT 74 TO HWY 165 ~  
 ~ TURN RIGHT ON BENT BROTHERS BLVD JUST PAST LOAF 'N JUG ~  
 ~ TAKE A LEFT JUST BEFORE THE FIRE STATION ~

**FULL MEAT DEPARTMENT**  
 FEATURING  
**CHOICE CERTIFIED**  
**HEREFORD BEEF**



**For All Your  
Camping Needs!**



**CUERNO VERDE POST 7305**  
 5445 Cuerno Verde Blvd.  
 Colorado City/Rye  
[www.vfwpost7305.org](http://www.vfwpost7305.org)

**MONTHLY MEETING**  
 3rd Saturday  
 Lake Beckwith Marina  
 Meet & Greet 9am ~ Meeting 10am  
 For more info ~ 676-3650 or 821-0782

**Activities we support:**

- Social Programs
- Walsenburg Veterans Home
- Annual Memorial Day Observance  
 Colorado City Cemetery
- Buddy Poppy Distributions
- Supporting Veteran Services



# The Charming St. Charles River above San Isabel Lake

You'll take dozens of pictures on the short hike from the western edge of San Isabel Lake, up the St Charles River, and through the picnic area. This shady hike is easy enough for children and a great place to explore the variety of wading pools along the way. Many of the pools are foot-friendly with soft gravel bottoms, but water shoes will make the day even better.

Pack a lunch or grab a sandwich at the Lodge and follow the boat ramp down to lakes edge; at the ramp go right and follow

the sunny path around the lake to the west. As you reach the west edge you will find a trail leading into the forest to your right. Continue up through the park until you hear the river just in front of you and stay to the right of the river. The trail will end and require an easy cross of the river about 500 feet in,



with the trail picking up again on the other side of the river.

From this point, let the kids (or the dog) pick the path, and the wading pools. The cool water will get plenty of attention but the length of the trail to

several well-placed picnic tables is short so there is no need to hurry.

Two footbridges will cross the river along the way and both sides of the river offer clean picnic spots and include fire pits at some points.

Near the top of the trail, watch for a beautiful natural staircase worth several photos. There is also a nearly waist deep pool at this point which may easily become your destination for the day.



**A CUTTING EDGE TREE SERVICE**  
719-744-6002

Free Estimates - Call Today  
Now accepting credit cards  
email: acuttingedgeco@gmail.com  
FB: acuttingedgetreeservice  
acuttingedgetreeservice.com

Tree Removal  
Tree Trimming  
Fire Mitigation  
Stump Grinding

Storm Damage  
Clean Up  
60' Bucket Truck  
Chipper, Stump Grinder

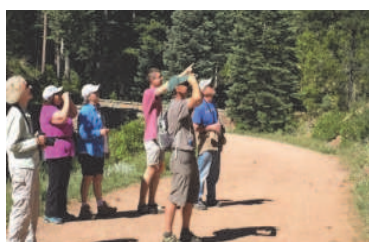


### HIKING, BIKING, FISHING, & TUBING

It's the perfect time to enjoy our River Campus in Pueblo and our Mountain Campus in Beulah!

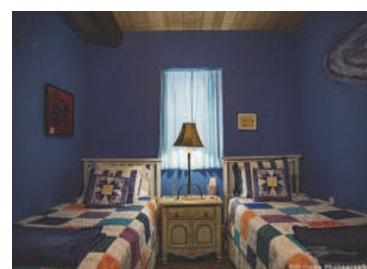
Ride your tubes down the Arkansas River from the Lake Pueblo Dam. Bike through Pueblo on the paved American Bicycle Trail System. Cast your line at one of many fishing holes along the river. Or take a scenic drive to Pueblo Mountain Park and hike on historic trails among the ponderosa pines!

Check out our guided hikes and bird walks at [hikeandlearn.org](http://hikeandlearn.org)!



### MEET LIVE BIRDS OF PREY AT THE RAPTOR CENTER!

Come visit our resident raptors Tuesday through Sunday from 11am to 4pm. Don't miss our Weekend Raptor Talks every Saturday and Sunday at 11:30am (weather permitting)!



### WEDDING VENUES & OVERNIGHT LODGING

Whether you're planning your wedding, a company party, or your next family reunion, the NWDC has a space for you! Our scenic River Campus Deck provides a panoramic view of the river and our covered Picnic Pavilion. In Beulah, book a room or the dorms at the Horseshoe Lodge for a charming mountain getaway or group retreat. Our outdoor Amphitheater overlooks Beulah Valley and is just a stone's throw away from our rustic WPA-era Pavilion, perfect for weddings and receptions.



too much family for the holidays?

We can help

special rates for valley residents  
newly refurbished rooms  
Close to everything in the community



**BOB PATEL**  
General Manager  
6670 W. Hwy 165  
Colorado City, CO 81019  
719-676-2340  
[daysinn11777@yahoo.com](mailto:daysinn11777@yahoo.com)



**AUGUST**

- 2-4 Beulah Melodrama- 6:30pm, Goodpasture Barn, 7970 Hwy. 78 W., Beulah [www.beulahvalleyartscouncil.org](http://www.beulahvalleyartscouncil.org)
- 3 Beulah Cool Run Classic Car Show, see [www.beulahvalleyartscouncil.org](http://www.beulahvalleyartscouncil.org)
- 3-4 64nd Annual Beulah Arts & Crafts Show- and Car Show 10:00 - 4:00, [www.beulahvalleyartscouncil.org](http://www.beulahvalleyartscouncil.org)
- 10 Youth Wrestling Golf Tournament, Hollydot Golf Course, Colorado City
- 11 Greenhorn Valley Customer Appreciation Picnic- noon, Greenhorn Meadows Park, Colorado City
- 27 Annual Mountain Aire Festival- 4pm Dinner, 6pm Live Auction, Christenson's Brush Canyon Ranch, Rye

Aug. 23-Sept. 2 Colorado State Fair and Rodeo-Pueblo

**SEPTEMBER**

- 14 10th Annual High Peaks Music Festival- Westcliffe [highpeaksmusicfestival.org](http://highpeaksmusicfestival.org)
- 21 6th Annual Hoofit4Harlie - half marathon run @ 9:30 a.m. 5k & 10k run/walk @ 10:00 a.m. See Harlie's Greenhouse on Facebook, or [harliesgreenhouse.com](http://harliesgreenhouse.com)
- 28 Greenhorn Valley Chamber of Commerce Golf Tournament, Hollydot Golf Course, Colorado City

September 20-22 Chile & Frijoles Festival-Pueblo

**OCTOBER**

- 12 5th Annual CC/Rye Lions Club Autumn Car Show & Craft Fair 10am-3pm, Greenhorn Meadows Park. Cars register at 9am. DJ, 50/50 Raffle, Door Prizes all day.
- 22-23 Fall into Christmas- 10am-4pm, Beulah Community Center
- 31 HalloweenTown- twilight, Main Street in Rye

**MAY**

- 19 Colorado City Parks & Rec Youth Softball Golf Tournament, Hollydot Golf Course, Colorado City
- 21 Rye-Colorado City Saddle Club Gymkhana - 6:30pm, every Tuesday nite thru Aug. 6th at the Colorado City Arena. Membership info and schedule changes at [www.rccsaddleclub.com](http://www.rccsaddleclub.com)
- 27 Cuerno Verde VFW Post 7305 Memorial Service 9am, Colorado City Cemetery E. Jefferson Street, right on Sandy Court
- 31 Colorado City Parks & Recreation Pool Opening Day, 12-5pm, 5000 Cuerno Verde Blvd, Colorado City

**JUNE**

- 1 Friends of Hollydot Golf Tournament, Hollydot Golf Course, Colorado City
- 2 In Concert: Classical Music in the Valley, 2pm, Southern Colorado Community Bank, Hermit Park Pavilion, Westcliffe. Free concert, 719-371-6493
- 14 Rye-Colorado City Saddle Club Team Sorting - 6:30pm, every 2nd & 4th Friday through August at the Colorado City Areana. See [www.rccsaddleclub.com](http://www.rccsaddleclub.com)
- 18 St. Aloysious Golf Tournament, Hollydot Golf Course, Colorado City
- 22 Bantom Football Golf Tournament, Hollydot Golf Course, Colorado City
- 22 Beulah Valleywide Garage Sale- 9am-4pm. Maps at The Market in downtown Beulah.

**JULY**

- 4 Cuerno Verde VFW Post 7305 - Veterans, Active Military & Family 4th of July Picnic-noon, Greenhorn Meadows Park. Call 676-2375 for info
- 6-7 Scrappy Ladies Quilt Show- 10am- 4pm, La Veta Community Center. Raffle on July 8th
- 11-14 High Mountain Hayfever Bluegrass Festival, Bluff & Summit Park, Westcliffe - [highmountainhayfever.org](http://highmountainhayfever.org)
- 12-14 Sangre de Cristo VFC Annual Yard Sale Fundraiser, 8am-5pm, Peaks to Prairie Activity Center, 4705 Santa Fe, Colorado City
- 26-28 Beulah Melodrama- 6:30pm, Goodpasture Barn, 7970 Hwy. 78 W., Beulah [www.beulahvalleyartscouncil.org](http://www.beulahvalleyartscouncil.org)
- 27 Rye High School Booster Club Tournament- Hollydot Golf Course, Colorado City



**COVER PHOTO BY DEB STRAUB**

**Colorado City Swimming Pool**  
 5000 Cuerno Verde Blvd  
 Colorado City  
 Monday-Saturday 12:30 - 4:30  
 Lap Swim TTH 8:00 - 9:00 a.m.  
 Aerobics MWF 8:00 - 9:00 a.m.

## Frontier Pathways Scenic Byway or the Taos Trail

**Frontier Pathway:** This old frontier zone marks the intersection of Native American, Spanish, French and American territories. First were the Utes, then the European explorers, then traders, trappers, homesteaders, ranchers, and prospectors came through and left their marks on the land. Historic buildings from mining operations, Victorian towns and long lost cattle empires line the route. And the snow-capped mountains, carpeted meadows, jagged canyons, and aspen-covered hillsides have not changed.

Most folks start the drive out of Pueblo. I usually begin at Westcliffe. From Westcliffe I take State Highway 96 east, towards Pueblo. I usually just go as far as McKenzie Junction in Hardscrabble Canyon and then turn right and take State Highway 165 to Rye and Colorado City. It's a beautiful drive through forested mountain countryside.

At Ophir Creek there's a hairpin turn in the paved road. In the middle of the turn there is a dirt road leading westward to Ophir Campground, Deer Mountain and the Greenhorn Mountain Road. Just south of Ophir Creek is Bishop's Castle. The road is excellent and, if anything, is too short. Shortly after Bishop's Castle the road passes by Lake Isabel and then leads out onto the flatter grassy slopes of Rye and then down the Greenhorn Canyon to Colorado City and the I-25.

The drive from Pueblo to Wetmore takes you out of the high plains climate zone and into the low montane zone. This is seen by the effects of the increase in precipitation:

the grasses and cacti give way to the junipers and pinons of the foothills. There are several ranches along the way that qualify as Centennial Ranches: they've been held by the same family for over 100 years. When they look like this, it's easy to see why the original homesteader's descendants have not moved on.

Take a look at: Wetmore to McKenzie Junction and McKenzie Junction to Colorado City. Then there's the section of road from McKenzie Junction to Westcliffe and that gorgeous stretch from Westcliffe to Gardner.

**The Taos Trail** broke into three separate routes as it approached Colorado on the way to Santa Fe. All of the routes followed ancient hunting, trading and Indian raiding trails, but they were distinctly different and all presented unique challenges.

The shortest route (and, due to Indian attacks, the most dangerous) cut southwest through Kansas, into the Cimarron Valley, and crossed the northwest corner of Oklahoma into New Mexico. The Mountain Branch followed the Arkansas River west to Bent's Fort and onto La Junta Colorado, then southwest across the grasslands to Trinidad over Raton Pass into New Mexico.

The Western Branch of the Santa Fe Trail was most commonly called the Taos Trail. It followed the Arkansas River further west to its confluence with Fountain Creek in Pueblo. The trail headed south across the St. Charles river into the Greenhorn Valley. After crossing the Greenhorn River it continued south to the Huerfano River at Badito, west up

Oak Creek through the Sangre de Cristo Mountains by a pass of the same name and to Santa Fe by way of Taos.

The Taos Trail also was called the War Road and the Huerfano River Trail. Historic records indicate it led native tribes, traders, trappers, the Spaniards, French, settlers and eventually a stage route through the Greenhorn Valley.

The actual location of historic trails and sites are extremely difficult to prove. Early travelers would attempt to take the easiest route depending on the weather conditions and other factors. Although remnants such as wagon ruts and historic building remains exist at some locations, such sites have not been located in the Greenhorn Valley.

To get a feel for the Taos Trail drive south from Colorado City on State Road 181, Apache City Road. The historic Greenhorn Settlement existed at the shady spot where the Greenhorn River crosses the road.



The Taos Trail headed southwest from here toward the landmark trail marker, Badito Cone\*. The Bandito Cone is just above where the trail left the river and headed west up Oak Creek. Today you must continue to Interstate 25 and travel south to the first Walsenburg Exit.

Turn right onto County Road 69 traveling northwest heading towards Gardner. The remains of the Badito settlement are just east of Farista, about half-way between Tioga and Gardner and just south on County Road

520. The Territorial Daughters of Colorado have erected a bronze marker to commemorate the Badito Crossing on the Taos Trail.

Continue on County Road 520 south. Historic as well, it is commonly called the Yellowstone Road. Yellow stones appeared on the trail as by-products of mines in the area and were called Piedra Amarillos or Yellow Rocks. The road travels about 15 miles to meet up with State Road 160. Turn left to return to the valley through Walsenburg.

# Come to Max's in Colorado City



6675 Hwy 165, Exit 74

719-676-6297

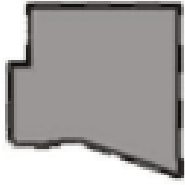


Open Mon - Fri  
5:30am to 1:30pm  
Saturdays  
7am to 12:30pm

Daily Specials  
posted at  
Drive-up Window

Located in the  
Ace Hardware  
Parking Lot

Delivery Available  
M - F 7am to 9am  
Call 676-2905



## How will you KNOW? What will you DO? Pueblo County Mountain Community Preparedness Provided by the Rye Fire Protection District

**2019**

**Pueblo County** uses Twenty First Century Communications for their Emergency Telephone Notifications System (ETNS).

- Web-based
- Telephone based backup system
- On the fly or pre-recorded campaign
- Map or Contact List launch
- Detailed Reports

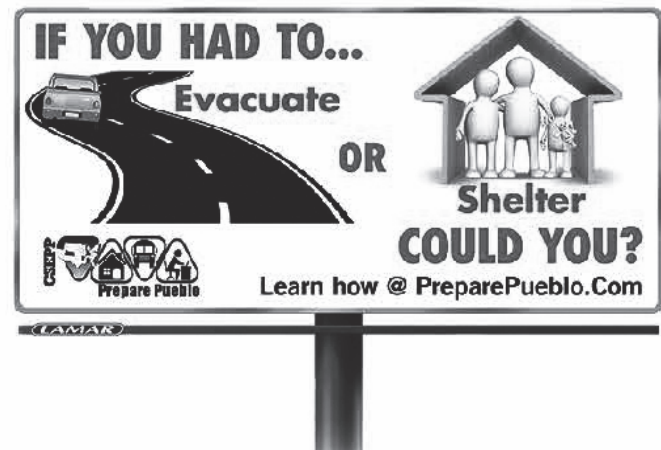
Home numbers are provided to the 911 center by local phone provider. Citizens can register their cellular phones or Voice over Internet (VoIP) phones at [www.pueblocountyoptin.com](http://www.pueblocountyoptin.com)

Aside from ETNS...First responders/officials notify via: Route Alerting (loud speaker patrol and door to door checks) telling residents to do one of two things.....

### Evacuate or Shelter-in-Place

During an evacuation you will be asked to secure your home and take your family and pets (if able to load quickly) away from the threat. This is most likely requested by officials during a flood or wild land fire.

If you are told to shelter-in-place, it is likely a chemical or weather event. During this time period staying indoors is how best to keep your family safe. Going to an interior room with no windows and turning off ventilation systems may be requested.



The Pueblo County Sheriff's Office Emergency Services Center houses the 911 center as well as an Emergency Operations Center and a Joint Information Center. During a community disaster, these centers will coordinate and order resources, manage situational awareness, and distribute public information.

### **You can be better prepared by taking some preparedness steps:**

Pack a 72 hour kit

Food, water, battery operated flashlight and radio, tools, first aid kit, cash, plastic sheeting whistle, a change of clothes, duct tape, matches, etc. This kit will be important if you find yourself shut in for extended time periods with no electricity but it is also a great item to grab if you have to evacuate quickly.

### **Keep copies of your Vital Documents somewhere secure and easy to get to if you have to evacuate.**

Copies of....

- Birth Certificates
- Social Security cards
- Drivers Licenses
- Adoption Records
- Wills
- Insurance policies
- Credit Cards
- Credit, Investments, and Bank Account #'s
- Titles, Deeds, Trusts

### Know where to go for information during an emergency



#### **Social Media Accounts**

- **PCSO Facebook**  
<https://www.facebook.com/pueblosheriff>
- **Twitter@Pueblo Count SO**
- **Twitter@Rye\_Fire\_Dist**

#### **Websites**

- [www.puebloemergency.info](http://www.puebloemergency.info)
- [www.ryefiredistrict.us](http://www.ryefiredistrict.us)

#### **Emergency Alert Station**

- KCCY 96.9

# Hike to the St. Charles Natural Arch above Rye



Saint Charles Arch is an old alcove natural arch eroded through granite. Granite arches, especially of this size, are rare. It is located on the east bank of Little Saint Charles Creek in the San Isabel National Forest, in Pueblo County, Colorado, at an elevation of 7,608 feet (2,319 meters)

Hikers can get trail information from the ranger station in Lake Isabel before attempting this hike. Saint Charles Arch has a span of 33 feet and a height of about 45 feet.

The arch is accessed via a lengthy Forest Service trail.

From Colorado City via CO-165 W travel 10.8 miles and turn right onto Robb Rd, continue 0.6 mile, continuing onto Old San Isabel Rd 0.6 mile. Turn left onto San Martines Rd for 0.4 miles and then take a slight left onto Deifendeffer Road,

continuing 0.7 miles.

There are 3 additional places to park.....

You can park off of Robb Road, or go down a bit further, .6 mile downhill to its intersection with Old San Isabel Road. Park here, or turn left (northwest) onto Old San Isabel Road and follow it for .2 mile to San Carlos Road 320.

You can also drive the .3 miles down to the creek and park by the creek if the road is not muddy.

Once at the creek, walk on the main track and follow the cairns and markers eastward. It's a little less than 2 miles to the granite arch. The trail heads uphill at first, and then downhill to the Little St. Charles Creek again, and the arch.

Distance: 5-6 miles round trip, (depends on where we park);

Difficulty: easy-moderate; elevation gain 700 ft

**What To Bring:**

In order to hike up the arch, you will need to cross the creek, so water shoes are recommended if you don't want to get your hiking shoes wet. Poles are

recommended!

There will be water running in the creek. If a warm day is in the forecast, be sure to bring some water for you & your dog. Other attractions near St.

Charles Arch are Bear Canyon Valley, two miles northwest; Klipfel Meadow Plain, two miles north; San Isabel, three miles west.


## LENDERS GO LOCAL

THEY KNOW YOUR

## SECRET FISHING SPOT.

WWW.BANKSANJUANS.COM  
 COLORADO CITY, FLORENCE, CAÑON CITY, PUEBLO, PUEBLO WEST

**S**ome things are best kept secret. Like a favorite fishing hole. Others you want to tell the world. Like a favorite bank. Because when a place is this good you gotta share. So when you're ready to land the big one, come on in and chat. We have all the tackle you need.



DIVISION OF GLACIER BANK

**ONE BIG HAPPY LITTLE BANK**

Member  
 EQUAL HOUSING LENDER  
 FDIC



**Looking for a place for your next party?**

PUEBLO SOUTH/COLORADO CITY  
**KOA Kampground**

3000 Square Feet  
**Social Hall**



9040 I-25 South @ Exit 74  
 pueblsouth@koa.com

**Reunions**

**Receptions**

**Holiday Parties**

**Birthdays**

719. 676.3376

### Greenhorn Valley Homes for Sale






**2075 Main Street, Rye PERFECT RYE, COLORADO RETREAT!**  
 Live above the clouds in the sleepy village of Rye in this eclectic 1929 Rye original, which was remodeled circa 2000 with charm, class, and a creative flair. The home has potential for 4 bedrooms or 2 bedroom with living, family, and formal sunken dining room. Barn-style garage and addition allow for upstairs / downstairs unfinished hobby rooms or perfect for an art setup. Front and back yards are fully privacy fenced. Tidy yards are well-kept and low maintenance. Newer appliances throughout. fully accessible seclusion at its finest. Just minutes from all amenities, hiking, fishing, cross country skiing, boating, golf, softball, local sports, and the list goes on... All of this can be yours for \$239,000.

**3126 Armstrong Court** This **COLORADO CITY CLASSIC** two story boasts a Master Suite combined with living area, walk-in closet, and a walkout balcony for extraordinary views! Two additional bedrooms, a bath, kitchen, dining, and living room with cozy wood stove make up the main floor. Two car attached garage includes an additional room. Back patio area is perfect for a barbeque and home is minutes from fishing, golf, & hiking. This +/- 1,600 square foot beauty includes central air and has been recently updated with style and charm. Just \$235,000. Call today!








**Capture Colorado**  
 MOUNTAIN PROPERTIES, LLC

719-568-3842

*You can contact Gunny about these properties:*

(719) 568-3842  
 (719) 742-6000  
 GPagnotta1969@gmail.com



Gunny Pagnotta

# Beekeeping in Southern Colorado



In Colorado, we have commercial beekeepers. These folks manage several hundred to several thousand honey bee colonies following the bloom, using their colonies in pollination rental for part of the year and then

using them for honey production. But most of the beekeepers in Colorado are hobby beekeepers. A hobby beekeeper maintains less than 50 colonies. They may live in towns and cities or in rural areas. They may be professional

people like doctors and lawyers or individuals that work in offices or own their own businesses. A hobby beekeeper is seldom motivated in recouping their investment. They just love the hobby of beekeeping!

In this area of Colorado, spring is the best time of the year to start a bee colony. The bees will have the remainder of the season to become established, they will have abundant floral resources to build their new home and they can store enough honey to make it through the winter.

The honey bee (*apis mellifera*) in Colorado spends the winter in the hive clustered around the queen. The bees beat their wings and shake their bodies as they move as a unit eating the honey they have stored for the winter. This allows the center of the cluster to maintain a temperature of 97F. As the days start to get longer in late February and March, the queen begins to lay eggs to replace the bees that have died during the winter and in anticipation of spring.

Spring is a delicate time for bees. The bees begin to run out of food stores and

they need to start increasing in number so they have plenty of bees to gather pollen and nectar. As early as late March and early April our trees begin to bloom. On warm days the bees begin gathering pollen from these tree blossoms. The bees are vegetarian and depend on pollen as their source of protein. As the weather continues to warm dandelions and other flowers start to emerge and provide the first nectar for the hungry colony. It is this nectar that the bees use to make honey. A honey bee will gather enough nectar in her lifetime to make only 1/8 teaspoon of honey.

The Greenhorn Valley is a wonderful place to raise bees. The mountains and valleys usually provide shelter from the wind. The afternoon rains provide moisture for a variety of flowers and shrubs. And

See *Beekeeping* p. 9

**SOUTHERN COLORADO SERVICES**

**(719)542-6910**

**1731 Erie Avenue  
in Pueblo**

southerncoloradorecyclers.com

- **Recyclables**
- **Paint**  
\$5-8 per gallon  
with many colors to choose from
- **Electronics**  
Televisions ~ Office Electronics ~ Computers  
Small Appliances ~ Audio/Video Monitors
- **Portable Toilets**  
Construction ~ Special Events ~ ADA  
Handwash Stations ~ Residential



Other beekeepers allow the bees to gather nectar all summer and harvest the honey in the fall. This honey, usually called wild-flower honey, will have a distinct flavor, depending on the flowers that are prevalent in the area.

Now that you know where the honey comes from think carefully about the chemicals that you use when spraying your property. The chemicals that you use may end up in the honey that you buy at the local farms market!

**Beekeeping**  
Continued from p. 8

the rugged terrain limits the farming of crops that require spraying large amounts of pesticides and herbicides.

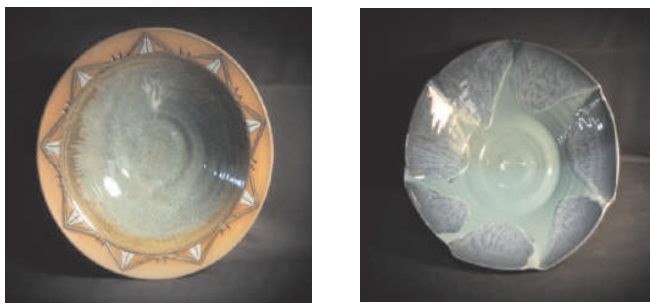
Honey can be harvested whenever the beekeeper finds an abundance of honey in the hive. Some people like to harvest honey after a specific bloom. For instance, bees will gather nectar from apple trees in the spring. If you have an abundance of apple trees in your area you can harvest the honey when the apple blooms

are finished and you will notice a distinct flavor of apple blossoms in the

honey gathered because that is the nectar the bees used to make the honey.

**Red Cloud Pottery**

Made in Rye, Colorado



Available at Main Street Boutique in Rye & Willow Creek Gifts in Colorado City

**SCRAPPY LADIES QUILT GUILD ANNUAL SHOW, SALE, BOUTIQUE, & RAFFLE**



**JULY 6 & 7 ~ 10AM TO 4PM**

IN CONJUNCTION WITH ART IN THE PARK  
LA VETA COMMUNITY CENTER ~ E. RYUS AVE

FREE ADMISSION

**THE RAFFLE WILL BE HELD JULY 8TH**

**An Affordable Carpet Cleaning Company**

35 Years Experience with residential, commercial, and churches  
Quotes and Senior Discounts available  
Upholstery Cleaning too  
Sam Scerbo

719-890-1079 or 719-989-7824

*A clean carpet reflects a clean environment*

**Make Your Dream House a Reality...**

Apply @ [frontierbankco.com](http://frontierbankco.com)

- Apply when it is convenient for you
- Complete your application in as little as 20 min.
- Loan officers available if you need help
- Detailed cost information
- Explore rates, fees & other resources

*Decisions made locally - We service our loans*



*...We Make it Easy!*



**Frontier Bank**

[www.frontierbankco.com](http://www.frontierbankco.com)



Pueblo Branch | 4115 Outlook Blvd. | 719-296-1225  
Pueblo W. Branch | 18 E. Spaulding Ave. | 719-547-9992

**TUESDAY THURSDAY SPECIAL**  
4 or more ~ \$23 ea w/cart



**TWILIGHT RATE**

18 Holes w/cart ~ \$30

M-F after 12pm  
& after 1pm on weekends

*Best Value in Southern Colorado*

CALL FOR TEE TIMES  
**HOLYDOT**

Hollydot Golf Course  
55 North Parkway Drive  
COLORADO CITY

719.676.3341  
1.866.307.2792

# Delicious Dining Choices in the Valley and Beyond



**The Beulah Inn:** since 1986 this restaurant

and lounge has been cutting their own steaks. Well

run business where the restaurant and gift shop

known for their delicious Prime Rib, Taco Tuesday and other daily specials. 8920 Grand Ave Beulah, CO

**The Lodge at San Isabel:** has been a family

have been serving customers for years. It's worth the drive to try their homemade fudge. Hwy 165, San Isabel, CO

**Max's Place:** Owner John Schaiberger is proud of the fresh beef he serves which is cut locally by grocer Scott Swartwood of Valley Market. The awesome green chili and delicious breakfasts are well-known by travelers and locals. 6675 Hwy 165, Colorado City, CO

**Obie's Fillin' Station:** delicious BBQ done right. Obie's has a menu of BBQ favorites along with a bar, live

music, outdoor seating. **The Round Table at the Hollydot:** offers cool outdoor seating, a view of the Greenhorn Mountains and a wonderful steak. Full menu and homemade fries too. 55 N Parkway Drive, Colorado City, CO

**Three Sisters Tavern & Grill:** Truly delicious food and great service. The owners really are sisters and they make getting off I-25 worthwhile. For an unforgettable view take your meal outdoors on the patio. Hwy 165, Colorado City, CO

**Subway Sandwiches:** Fresh and ready to go. Located in the Fastbreak Station.

**The Valley Grind:** drive through coffee shop at its best. Offering a hot and delicious cup of coffee, with homemade cinnamon roll or pastry, or a frozen drink to meet anyone's tastes. Located in the Ace Hardware parking lot on Highway 165.

**Viktorios Pizzeria:** has a wide variety of Italian and American menu items, with some big surprises for a small town. Join the pool tournament Friday at 7 p.m or Karako on Saturday. Bent Bros Blvd. Colorado City

**Valley Market:** Fresh Deli, Chester's Fried Chicken and Hunt Brothers Pizza- Pick up all your picnic and camping food on your way up the mountain to Lake Beckwith or San Isabel Lake.

ROASTED PEELED FROZEN PUEBLO CHILI



**PEPPERS & PETALS, LLC**

2115 SANTA FE DRIVE - 546-3137

NOW CARRYING ZUBAL GOAT DAIRY GOAT CHEESE

Its Planting Season and we have the best selection in town of **LOCALLY GROWN** annuals, perennials, hanging baskets, rose bushes, patio tubs, veggie plants, herbs, bird houses, tons of metal yard art, great selection of solar lights, windspinners & much much more!

MRS. MAUROS POTICA & VILLAGE PIE MAKER PIES

We Are Open Year Around  
7 Days a week - 9am-6pm



## "Friends of Harlie" @ Rye Elementary School Present the 6<sup>th</sup> Annual



<http://harliesgreenhouse.com>  
for more information and to register

<http://www.active.com/colorado-city-co/running/hoofit4harlie-2019>

**half marathon run @ 9:30 a.m.**

**Starting Line:** Barickman House 8140 Zorn Rd in Rye

**Finish Line:** Parking lot of True Value

**5k & 10k run/walk @ 10:00 a.m.**

**Starting/finish Line:** Parking lot of True value

**9.21.19**



**THE CRAFTSMAN LODGE**

The Craftsman Lodge  
10950 Bartlett Trail  
Rye CO 81069

Phone: 719-489-3157 (Lodge)  
Mobile: 719-989-0853  
E-mail: craftsmanlodge@gmail.com  
Web: www.craftsmanlodge.com

Catherine M. Blanton  
Owner/Operator



# Remarkable Hollydot Golf Course

The 18 hole Hollydot Golf Course which celebrated its grand opening in May of 1973 is nestled in the Greenhorn Valley with the beautiful Greenhorn Mountains towering majestically as a background for the golf course located just 20 minutes south of Pueblo in Colorado City.

The Par 71 course has five different tee-off spots: Gold(6854 yards), Blue(6443 yards), White(6,000 yards), Red(5,000 yards), and Orange for Seniors (5,500 yards). The white was recently lengthened and the red was shortened slightly.

The Pro Shop is filled with top notch golfing apparel and equipment to choose from. Just right for a gift if you have a golf enthusiast.

Prim Ivan, Head Pro at the golf course, has been at the Hollydot Golf Course for over 20 years. Prim offers lessons for all ages and experience levels.

Hollydot Golf Course is very well run, well laid out, and the weather

seems to be unusually cooperative. The course hosts tournaments throughout the season with local teams, as well as many from Pueblo and other surrounding communities. The rates are very affordable, with junior, family and senior rates available.

This year golfers, travelers and locals can enjoy the convenience of dining at The Perfect Round. Whether you prefer the cool air conditioned bar and restaurant or dining alfresco on the patio with a full view of the Greenhorn Mountains, don't miss this dining experience.

You'll enjoy the interesting mix of small town locals and golfers who



travel from far and wide to play at Hollydot Golf Course. **For more info: 719-676-3341**

### Hollydot History

The first nine holes of the Hollydot Golf Course were completed in 1961.

Holland and Clyde Young designed the course and Ron Higgins built it. The course name is a combination of the owners of the land the course was built on: Holland and Dorothy Duell's first names: Holly

and Dot. The West nine holes opened in 1965 and the clubhouse was built in the winter of 1966 to 1967. Eventually the course grew to 27 holes. The official Grand Opening was held in 1973

**• Keeping the Old West alive •**

*Spend a week in Colorado each summer and learn a new skill!*



## SOUTHERN ROCKIES HERITAGE SCHOOL

*at Trinidad State*



**Hatmaking**  
 Jun 7-11, 2019  
CLASS FULL

**Blade Forging**  
 June 3 - 7, 2019

**Leather Holster Making**  
 June 10 - 14, 2019

**Scrimshaw**  
 June 17 - 21, 2019

*See more at [southernrockiesheritageschool.org](http://southernrockiesheritageschool.org)*

Also this summer at Trinidad State: **NRA Gunsmithing Series**  
 Classes include stockmaking, engraving, gunstock carving, checkering and more! Find details at [trinidadstate.edu/nra](http://trinidadstate.edu/nra)



**Trinidad, Colorado • [www.southernrockiesheritageschool.org](http://www.southernrockiesheritageschool.org) • 719-846-5724**

## Fifth Annual Lions Club Car Show and Craft Fair



The Fifth Annual Colorado City/Rye Lions Club Autumn Car Show and craft fair will be held Saturday, October 12, 2019, at Greenhorn Meadows Park beginning at 10:00 am and ending at 3:00 pm. Cars will register from 9:00 am until 10:00 am the morning of the show. The registration fee is \$30 for cars and vendors and the show is

open to all years, makes and models of anything with wheels.

For over half a century the local Lions Club has served the community through a multitude of programs including meeting the visual needs of young children in our community, providing Christmas boxes of food for deserving families, assistance with children's

clothing and presents for at least 100 families and providing scholarships for Rye High School Students, among other projects.

There will be music by a DJ, a 50/50 raffle, and raffles and door prizes every thirty minutes at this family event. There is no admission for spectators, although donations will be accepted.

## Colorado City Parks & Recreation



Colorado City Parks and Recreation has a lot to offer for summer 2019.

The pool opens Friday, May 31. Open swim is 12:30 to 4:30 p.m. Monday through Saturday, and the cost is just \$2.50. Children under three swim free. There will be swim lesson sessions throughout the summer, as well as water aerobics and lap swim. *See pg 4 for schedule.*

The swimming pool, as well as the nearby recreation center, is available to rent for pool parties and celebrations.

The new pavilion at Greenhorn Meadows Park features 14 covered picnic tables, lighting and electricity. It is available to all and can be reserved for special occasions. Play baseball, kickball, soccer, frisbee or just enjoy the beautiful grass at the ball fields. Play on the play-

ground (12 and under), enjoy a pickup game on the basketball courts, picnic at the many tables in the park; take a walk along the creek.

Cross the creek into Greenhorn Meadows Campground. The campground has 15 RV sites with electricity and numerous tent sites, city water, full shower and bathroom facilities, a gazebo and a cave if you can find it! The campground now offers Wireless Internet access for visitors.

Walk around Lake Beckwith or stop and fish the lake (stocked by the DOW), launch your boat (no gas motors allowed), have a picnic.

For more information about Colorado City Parks and Recreation by calling 719-676-3059 or checking out their website at [cocity-parksandrec.com](http://cocity-parksandrec.com).

**LIVE  
FOR  
MORE**

Quality short-term therapy services to help you get back to what you love

**Life Care Center of Pueblo**  
719.564.2000

### BH<sup>2</sup> Land Surveying, LLC



**William S. Bechaver**  
Professional Land Surveyor  
22 years of experience

PO Box 20399  
Colorado City, CO 81019  
719.676.2072  
[bh2@ghvalley.net](mailto:bh2@ghvalley.net)

### LOG LOOB

"10 minute oil changes"

**Randy Lamaak**  
Store Manager

3360 W. Northern Ave.

719-564-5823



# Hiking the Greenhorn Mountain Trails

The Wet Mountains, also called the Greenhorn Mountains, are named for the amount of rain that has traditionally fallen on the range. Located within the San Isabel National Forest, it covers an area of 220,000 acres and is part of the San Carlos Ranger District.

The Wet Mountains are one of Colorado's lower ranges when compared to other major ranges in Colorado. It spans for fifty miles in a north-south direction beginning at the Arkansas River near Canon City and ending at the Huerfano River just north of Walsenburg.

The dominant peaks are Greenhorn Mountain at 12,347 feet; North Peak at 12,220; St. Charles Peak at 11,784; and Deer Peak at 11,572. Approximately 22,000 acres of the Greenhorn Mountain, is protected by the Colorado Wilderness Act. This designation provides an atmosphere that seems virtually untouched by humans. It also has eliminated all motor vehicle traffic, limits the number of hikers during certain periods of time, and requires strict camping guidelines.

Lake San Isabel a 40 acre reservoir was created by the WPA in the 1930's entirely for recreation. Other interesting sites include the abandoned Marion Mine, Maes Creek Burn Out, Apache Falls, the Blue Lakes, Chicken Lookout Point, Marion

## Beulah Summer Events

Beulah Valley can be reached from Colorado City via Crow Crossing to 3R Road, west on Hwy 165 pass Rye and San Isabel to 12 Mile RD , and from Pueblo via Hwy 78 West. All routes offer beautiful vista views.

Beulah is rich in history and tradition, some of which is still in tact: The 64th Annual Beulah Valley Arts and Crafts show held August 3rd & 4th, 10:00a.m. to 4:00 p.m. at the Beulah School grounds at 8734 Schoolhouse Lane. Wander the variety of artisans booths, enjoy lunch while listening to local musicians. For over 50 years Beulah has produced Melodramas and this year's dates are the week-

Lake and Dome Rock. Elevations: start 8,000', high point 11,580', end 11,580'

### The Bartlett Trail #1310

Length: 12.1 miles, Rated: moderate, Use: summer and early fall; hiking, horseback riding

The Bartlett Trail is in the Greenhorn Wilderness Area, so wilderness rules and regulations apply (especially no mechanized vehicles, including mountain bikes and hang gliders). If hiking from the Rye end of the trail, it's a long way up to the junction with the South Apache Trail on the southern shoulder of Greenhorn Mountain. At that junction, if you go north you'll come to the other trailhead for Bartlett. If you go south, you'll go deeper into the Wilderness Area. The Bartlett Trail skirts the upper part of Greenhorn Mountain by staying south and west of the upper mountain.

Access: The lower trailhead is south of Rye. Go through Rye on Main Street, turn left on Boulder, left again on Graneros Road, right on Hunter and right again on Baxter to the trailhead.

The upper trailhead is the same as for the Greenhorn Trail. Take SR 165 to Ophir Creek Forest Service Road #360. Go west for about 12 miles and then turn left on Greenhorn Mountain Road #369, go 17 miles to the parking area at the end of the road. USGS Maps:

ends of July 26-28th , and August 2-4, 2019 at 6:30 p.m., at the Beulah Community Center.

The Pueblo Mountain Park offers a variety of outdoor activities available throughout the summer by the Mountain Park Environment Center/ hike-and-learn.org

The Beulah Inn began business in the 1936 and is serving the Prime Rib on Friday evenings, as well as a many daily specials. They have a full bar, rich in character and characters from the valley.

The Market, located beneath the General store, is a quaint antique/ secondhand shop to fulfill your retail therapy needs.



Rye, San Isabel

### The South Apache Trail #1311

Length: 4.3 miles, Rated: hard, Use: summer and fall; hiking, horseback riding

Elevations: start 9,600', high point 9,600', end: 7,300'

This trail is a hard drop off the eastern side of the Greenhorn Mountain Wilderness. The trail ends at private property so the only way out is to go back up that relentless hill. At the parking area at the end of the road, follow the signs for the Bartlett Trail. Follow the Bartlett Trail for about 5 miles to the junction with the South Apache Trail. Go right and

follow the trail down the hill paralleling South Apache Creek.

Access: From State Highway 165, turn west at Ophir Creek Road (FR 360). Go about 12 miles and then turn left (south) on the Greenhorn Mountain Road #369. Go another 17 miles to the end of the road at the edge of Greenhorn Mountain Wilderness.

USGS Maps: San Isabel, Rye, Badito Cone, Hayden Butte

### Cisneros Trail #1314

Length: 10.4 miles, Rated: moderate, Use: year around; hiking, horseback riding, mountain biking, ATV, Snowmobiling

Elevations: start 8,940',

high point 11,220', end 11,220'

This trail rises from Lake Isabel into the heart of the Wet Mountains. It winds through gorgeous country alternating between heavy forest and open parks. Lots of wildlife and great wildflowers.

About three-quarters mile from the Lake Isabel Campground is a trail junction with the St. Charles Trail. St. Charles Trail will take you north onto St. Charles Peak (11,784') while the Cisneros Trail turns left and heads southwest towards Greenhorn Mountain (12,347').

See Hiking p. 14

Friday, Saturday & Sunday  
10am til 4pm  
8869 Grand Ave, Beulah  
lower level of the General Store  
themarketinbeulah.com

the Market  
antiques & more

## 2019 Summer Guide



### Hiking Continued from p.13

**Access:** The upper trailhead: From State Highway 165, turn west at Ophir Creek Forest Service Road #360. Go about 12 miles and then turn left (south) on the Greenhorn Mountain Road #369. Go another 17 miles to the end of the road at the edge of Greenhorn Mountain Wilderness.

**The lower trailhead:** Go through San Isabel around to the west end of the Lake to the upper campground. The Trail begins on the west end of the campground.

USGS Maps: San Isabel Greenhorn Trail #1316

Length: 7.8 miles, Rated: moderate, Use: summer and fall; hiking, horseback riding

Elevations: start 7,460', high point 12,000', end 11,340'

Although the summit just nudges above the timberline at 12,347 and only ranks as the 1,107 highest peak in the state. There isn't a higher mountain for over forty miles. So Greenhorn's summit provides a wonderful 360 degree view. The endless vista of the Great Plains makes up the views to the east. The spectacular and rugged looking Sangre de Cristo Mountains dominate the view to the west. Looking south the Spanish

Peaks with their twin looking summits rule your vision, and Pikes Peak makes its appearance to the north.

**Access:** The upper trailhead: Take SR 165 to Ophir Creek Forest Service Road #360. Go west for about 12 miles and then turn left on Greenhorn Mountain Road, go 17 miles to the parking area at the end of the road.

**The lower trailhead:** Turn left into Rye off highway 165 onto Main Street. It becomes Park Road. Veer right at the Y in the road veer onto Cuerno Verde Road. The road heads west and then south. After 1.6 miles there will be a small parking lot with a bridge crossing over Greenhorn Creek. This is the trailhead. USGS

Maps: Rye, San Isabel #1317 Millset

Length: 5 miles, Rated: difficult, Use: summer and fall; hiking, horseback riding

Elevations: start 8,000', high point 11,244', end 11,244'

**Access:** 9 miles nw of Rye 165 west side end at FDR 369

The Snowslide Trail #1318

Length: 5.7 miles, Rated: moderately difficult, Use: summer and fall; hiking, horseback riding.

Elevations: start 8,720', high point 11,500', end

11,500'

This trail climbs slowly up a ridge to the south of the Lake Isabel Recreation Area. This is pine and aspen country with great views and lots of wildlife. Bring lots of your own water.

**Access:** The lower trailhead is about 8 miles northwest of Rye on State Highway 165. To reach the upper trailhead take SR 165 to Ophir Creek Forest Service Road #360. Go west for about 12 miles and then turn left on Greenhorn Mountain Road #369, go 17 miles to the parking area at the end of the road. USGS Maps: San Isabel

St. Charles Trail #1326

Length: 7 miles, Rated: moderately difficult, Use: summer and fall; hiking, horseback riding. Elevations: start 9,200', high point 11,200', end 8,200'

From the northern trailhead, the St. Charles Trail works its way up to the west and wraps around the western edge of the St. Charles Peak summit "block" before heading south. The trail follows Beaver Creek for a short distance before rising again and crossing the ridge into the Amethyst Creek drainage, which it follows down to the lower trailhead. This is a beautiful hike through a lush aspen and pine forest with great views.

There is also a spur trail from the east end of Forest Service Road #335, off of the Greenhorn Mountain Road, that gives easy access to those just wanting to climb St. Charles Peak (11,784').

**Access:** The northern trailhead is in the Lion Park area, about 1.8 miles south of Bishop's Castle.

The southern trailhead is at the confluence of Amethyst Creek and St. Charles Creek, at the west end of the Lake Isabel Recreation Area. USGS Maps: St. Charles Peak #1330 Lakeshore

Length: .5 mile, Rated: easy, Use: year around; hiking

**Access:** FDR 317 to lake Isabel

The Squirrel Creek Trail #1384

Length: 4.8 miles, Rated: moderately difficult, Use: year around; hiking and horseback riding, ATV, Snowmobiling. Elevations: start 9,200', high point 9,200' end 7,800'

In the east central Wet Mountains this trail parallels Squirrel Creek down the hill from the main ridge of the Wet Mountains. Aspen and pine forest, big eastern views, lots of wildlife.

**Access:** The west trailhead is at the end of Forest Road #382, about 1.5 miles east of State Road 165 near Bishop's Castle.

The east trailhead is reached by passing through Pueblo Mountain Park along Squirrel Creek Road off of State Road 78 south of Beulah. USGS Maps: St. Charles Peak

The Dome Rock Trail #1387

Length: 2.1 miles, Rated: moderate (more difficult due to lack of maintenance)

Use: summer and fall; hiking and horseback riding. Elevations: start 7,740'

This short but almost over-grown and undefined trail rises 1,120' quickly on the eastern slopes of the Wet Mountains. But the views to the east over Beulah, Hogback Mountain and Signal Mountain and out onto the Plains toward Pueblo are hard to beat.

**Access:** The west trailhead is off Forest Road #382, about 1.5 miles east of State Road 165 near Bishop's Castle. Follow that to Davenport Campground and the Dome Rock Trailhead.



GET TO KNOW US!!

# SPANISH PEAKS REGIONAL HEALTH CENTER

Turn South from Colorado City and go 29 miles to discover the best healthcare in Southeastern Colorado

Call 719-738-5100



**justcuts**  
STYLE CUTS FOR EVERYBODY

**JUST \$10**

**MICHELLE MARTIN**

719-489-2121



**Walk Ins Only**  
Wed-Sat, 9am-4pm

**RYE PROFESSIONAL BUILDING**

2113 Main Street - Suite B  
Rye, Colorado

**Buy one, Get one FREE**  
**Excursion Boat Ride**  
Coupon must be presented at time of purchase. Not valid with any other offer. Limit one coupon per person, per day. Valid May - Sept.

# Fishing the Local Lakes and High Mountain Streams

The two obvious choices for fishing are Lake Beckwith in Colorado City, and San Isabel, further up highway 165. Lake Beckwith has something for everyone in that there is a wide variety of species available. For the warm-water fisherman there are Largemouth Bass, Crappie, Perch, Saugeye (Sauger and Walleye hybrid) and catfish, as well as stocked rainbow trout, and wild brown trout. There is deep, rocky bottom off of the dam, and a nice shallow shelf where the boat ramp is located.

Throughout the lake there are areas where there are submerged brush piles which make excellent structure for large bass and other predatory fish. This makes it an excellent location for any type of fisherman, whether it be a fly-fisherman, bait fisherman, or working structures with a spinning rod.

Boats are allowed on the lake as well as electric motors. This is a technique I like to use, in order to reach locations that the shoreline fisherman can-

not.

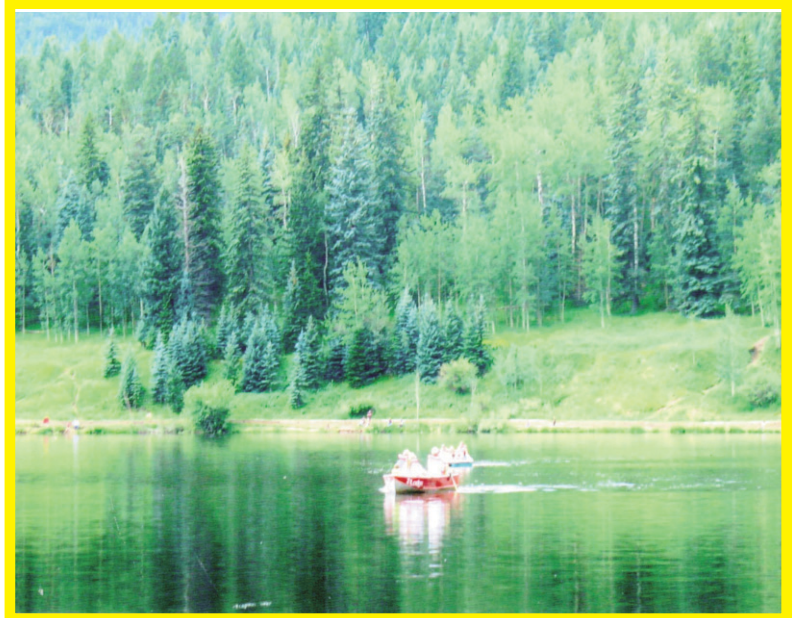
San Isabel is also an excellent location. It does not have the variety of species that Lake Beckwith has, but makes up for it with an abundance of trout. It has lots of shoreline access, for bait, spin and fly-fishermen alike. Rainbows and/or Cuttbow Trout are stocked frequently, as well as wild Brown and Brook Trout. Fish are taken with a wide variety of techniques. Bait fisherman tend to do well with a variety of options including worms, salmon eggs and powerbait. There are a lot of spinners that work well too.

Kastmasters are always a good option, as well as 1/8 ounce Krocodiles, Jakes Spin-A-lure, and Panther Martins. Another great technique is to fish a wet fly like a Pistol Pete or Wooly Bugger behind an Adjust A Bubble. My personal favorite technique is to get out on my float tube, and cast a double dry fly rig, towards the shoreline. Often, I can find some of the wild Brown Trout patrolling there, and

have an opportunity for some of the bigger fish.

For the more adventurous there are some excellent options that are a little bit off of the beaten path. There are a number of small streams around here for those willing to do a little walking and a little bit of bush whacking. There aren't a lot of big fish, but you find some very ravenous and aggressive smaller ones. The key to success on these smaller fast moving streams is to make a stealthy approach, using some of the brush to break up your outline.

Rainbow's and Brown trout are found at the lower elevations and can be had on just about any type of well presented fly. But as you work your way upstream you will find fewer Rainbow Trout, and more Brook Trout. Finally as you get near the upper reaches of the streams you can get into some Greenback Cutthroats as well. Greenback's are excellent fighters, but need to be returned immediate-



ly as they are currently on the "Threatened" list. North and South Apache Creek, Bartlett Creek, and Graneros Creek are closed to all fishing above the forest service property lines. Check the fishing regulations manual before you fish these.

Finally, Blue Lakes, at the top of Greenhorn Mountain have had a very healthy stock of Cuttbow and Rainbow trout. They are a little bit bigger than the stockers found in Lake Isabel and Beckwith, and are a bit more finicky as

well. Blue Lakes are located at the end of Ophir Creek road at the very top of Greenhorn Mountain, with one of the prettiest camping spots around.

Fish there are caught using a variety of standard techniques. My best advice here is to bring a variety of different options, so you can find the one that they are biting on. It's one of my favorite places to camp out and hopefully cook a couple of fresh trout while I am at it.

## Shop Locally this Summer!

The following are Chamber members and value your business

Greenhorn Valley View

Hollydot Golf Shop

Round Table Sports Grill

Edward Jones Investment

Chucka Agency LLC

Southern Colorado Real Estate Brokers

BH2 Land Surveying

The Service Center

Mountain Disposal, Inc.

Max's Place

Brooks Howard

Nomad Group

State Farm Insurance Agency

High Country Fence

Obie's Restaurant

Pueblo South KOA

Days Inn

Legal Shield, Identity Theft Shield

3D Vision Eye Care

Three Sisters Tavern and Grill

Bank of the San Juans

Kirkland Construction

Rye Telephone Company

San Isabel Electric

Mike Bowler

RALEIGH JAMES MEMORIAL GOLF TOURNAMENT

SATURDAY, SEPTEMBER 28, 2019



[www.greenhornvalleychamber.org](http://www.greenhornvalleychamber.org)  
[www.facebook.com/GreenhornChamber](https://www.facebook.com/GreenhornChamber)

# Beautiful Lake Beckwith



Mexican families living in a cluster of low adobe houses. For protection from the Utes, each house had a yard in front enclosed by poles planted in the ground, fastened to horizontal strips of wood with rawhide thongs. In back, a corral was made the same way.

Baca agreed to guide Gunnison's party to Fort Massachusetts and Gunnison began the survey of a possible route, via the Huerfano River, through Cochetopa Pass. Captain Gunnison seeking to speed up the mapping divided his team into two detachments.

Gunnison and the eleven men in his group were attacked by a band of Paiute (Ute) Indians. Gunnison and seven of his men were killed. Survivors of the attack alerted the other detachment of the survey team led by Beckwith who rode hard to aid Gunnison and his party. Arriving too late, they buried the victims and Beckwith took the survivors to Salt Lake City to spend the winter of 1853-54.

The naming of Lake Beckwith in Colorado City can be attributed to three possible men: some claim it was named for a Mr. Beckwith who enlarged the small lake in the early 1900's; others attribute the name to a well-loved Dr. Beckwith who settled three miles east of Rye in 1876; and many associate the name with Lieutenant (later Brigadier General) Edward Griffin Beckwith who led the Calvary escort for Captain Gunnison's ill-fated railroad surveying expedition and visited the Greenhorn Settlement in the summer of 1853.

The expedition roughly followed the 38th parallel, through Kansas and up the Arkansas River. After they left the Arkansas, Gunnison sent Lieutenant Beckwith out to find a guide to take them over the pass to Fort Massachusetts, the new military post in the San Luis Valley.

Beckwith found his way to the Greenhorn Settlement. He was greeted by Marcelino Baca and his Pawnee wife, whom Beckwith admired as a courteous lady of "matronly grace and dignity." Beckwith found six

# Flyfishing Spots in the Area

Springtime fishing has officially begun and fly-fisherman are preparing for some long day trips along the Arkansas and other southern Colorado rivers and lakes. Before a relaxing stroll while throwing a line out to a run, be ready for the changing Colorado weather. As well as clothing for any situation, basic necessities are needed when planning your day among the fish. Bring along food, water, flies, tippet, leader and be sure to include a valid fishing license.

You will also need plenty of "bugs". Some favorites due to their claims to fame have been Pheasant Tail Nymphs, Flashback Pheasant Nymphs, green or red Copper Johns, Black Midge Patterns, Juju Baetis, San Juan worm, RS2, black or cream color Avatars, and a Ninja Midge. A go-to fly when fish are rejecting others is a size 8 to 10 olive or black Woolly Bugger. Alternate your retrieval methods to find out what works for you. Fish tend to feed above the surface during this time of year. Also try using a Griffin's Gnat, Elk Hair Caddis or a Stimulator.

After run off the Rio

Grande River has some of the best fishing between South Fork and Creede. The Arkansas River from Salida to Pueblo also has great fishing, and is very accessible throughout the canyon. One cannot leave out San Isabel Lake, which produces above average size rainbows. Bear and Blue Lakes outside of La Veta and below Trinchera Peak have an abundance of trout. Monument Lake is also a good bet. These lakes produce great fish that are enticed by the Woolly Bugger and twitch at the sight of a Woolly being stripped through the water. Grape Creek, which runs off of DeWeese Reservoir, produces some challenging fishing and the fish love the stonefly in this area.

Remember, fly fishing is more than a solo sport and certainly isn't just for men. A lot of women are trying their patience, along with their spouse's. It is always fun to share the river and your experience with someone eager to learn.

The Drift Fly Shop and Anglers Addiction of Pueblo have knowledgeable and friendly staff. So find your favorite lake, river, or stream, and make some memories.

**Bring ad in  
for 5% off**

## Great Summer Better Life!

### CBD Products

- Tinctures
- Vapes
- Topicals
- Gummies
- Pet Products

**Exit 74 off I-25  
Behind KOA**

# Valley CBDS

Valley CBDS is your best source for CBD products. We can ship to anywhere!

**719-676-2195**

Mon-Fri 8-5

Sat 8-12

Or by appointment

6850 Highway 165 West, Suite G



## Colorado Pet Clinic

Small Animal Medicine and Surgery  
Thomas J. Churan, DVM  
719-676-2441

Please call for an appointment House calls also available

## CUERNO VERDE ART COUNCIL

presents  
ART SHOW & SALE  
TOM FORE  
Paintings

Bank of the San Juans  
Days Inn, Hwy 165  
and  
Victorio's Pizzeria, Fountain Square

May thru July 4  
Featuring local artists



For more information, or to join the group - call 676-4223

# Rye-Colorado City Saddle Club

The Rye Colorado City Saddle Club, according to records, started in the early 1960's with the main focus of the Club to be a family fun event where people can get together with friends and neighbors who share an interest in horses. This club didn't invent Gymkhana but they do know how to run the patterns and can be quite competitive all while having fun. The events do teach a variety of skills for every age. To the casual observer it may appear that the rider just 'sits' on the horse and the horse just runs off on its own. The non-horse person has no idea the challenges and skills that it takes to do this. They are athletes, both horse and rider. The skills to handle, control, teach/train the horse to maneuver a course is not easy. A non-horseperson doesn't understand the enjoyment, the intense physical workouts and the mental training it takes to work with a horse. You have to work as a team.

Physical attributes: riding helps develop balance, improves coordination and motor function. You train and strengthen all your muscles, riding pro-

vides joint mobility, improves circulation etc. You learn patience and self-discipline all the while increasing your confidence. If you don't think it is exercise, then read this part. At a walk, you burn calories at the rate of five calories per minute, up the intensity and you will burn that much more.

You are always learning new things about your horse which then leads to doing more with them. The end result is this, you connect with the horse and yourself. You are a TEAM now. Ready to work as one.

The competitive side of riding and showing teaches young and old to prepare and to muster the courage to compete. They



Cindy@ShortTakes2 Photography

learn respect, and responsibility for their actions. You take risks and enjoy the rewards and learn to handle the disappointments. But the overall consensus is that FUN is the number one priority.

The RCCSC is a large group of hard working, dedicated, friendly, family oriented people who enjoy the outdoors. They meet up weekly to challenge their skills by participating in the gymkhana's. The

events vary from barrel racing, pole pending, stake races, keyhole, stake, and flag races. They offer year end awards and a banquet. Gymkhana is scheduled to start Tuesday, May 21 at 6:00pm and will run every Tuesday nite on through to August 6th. The Saddle Club's Team Sorting begins June 14 at 6:30 p.m. at will run through August at tthe arena in Colorado City.

The club also organizes

some trail rides and they participate in the State Fair parade. Everything Thursday nite at 6:00 p.m. beginning June 1st is the Cattle Team Sorting event. Cost is \$10/adults and \$5/18 & Under. All of these events are rated #Family Fun#

To join in on the fun and for scheduling changes see rccsaddle-club.com.

## Kayak, Camp, and Hike at Nearby Lake Isabel



where you are headed.

The Lodge at San Isabel provides additional recreational opportunities. They have row and paddle boats to use on the lake. They also provide hunting and fishing licenses. There are 14 cabins available, many newly remodeled and some with multiple bedrooms.

Inside the lodge, which has been run by the same family for over 20 years, there is a restaurant, a gift shop, and a grocery store. Fishing

tackle and bait are available, as well as, homemade fudge in a variety of flavors.

The family oriented lodge is basically open from Memorial Day to Labor Day. The hours Wednesday thru Monday are 8am to 9pm each day.

They are closed on Tuesday. The lake is there for your enjoyment 365 days of the year.

You can get in touch with the lodge at lodge-sanisabel@comcast.com or by calling (719)489-2280.

One of the favorite year-round recreation sites in the area is Lake Isabel, located just 20 minutes from Colorado City on highway 165 at the north end of the city of San Isabel. If you are into fishing, ice fishing, camping, hiking, kayaking, swimming, picnicing or just relaxing with a book, Lake Isabel and the surrounding area have plenty of those things to offer. The pristine beauty of the lake

and the area around it are free or require a small day use fee, depending on

**Main Street Boutique LLC**  
 Gifts - Rye Souvenirs - T-Shirts  
 Locally Hand Crafted Items &  
 Glass Art by Natalie  
 Natalie Roles - Owner  
 2111 Main Street/P O Box 328  
 Rye, CO 81069  
 mainstreetbtq@hotmail.com  
 Closed Sundays & Mondays 719-489-2RYE (2793)

**ROUND TABLE**  
 SPORTS GRILL  
**719-676-3300**

# Ophir Creek and Other Area Campgrounds



The Ophir Creek Campground is located about 48 miles southwest of Pueblo, eight miles north of Lake Isabel. This campground is situated along Squirrel Creek at an elevation of 8,900 feet. There are 31 campsites in the campground. Twelve are back-in campsites suitable for small RVs. The remaining nineteen are walk-in tent sites. Each campsite has a picnic table and fire grate. Some of the sites are in an open meadow while the rest are shaded by spruce and aspen trees. This area is very pretty, especially in the fall and it is a great place to tent camp. Reservations are not accepted. Open May through mid October  
From Pueblo, go 25 miles south on interstate

25 to exit 74. Go west 26.5 miles on state Hwy 165 to FSR 400. Turn left and travel about a half mile to the campground.

**Activities**

**FISHING:** Fishing is available in Ophir Creek, Lake Isabel and St. Charles Creek.

**HIKING:** Hiking is available on the Second Mace, Squirrel Creek, Silver Circle, Dome Rock and South Creek trails.

**BIKING:** Biking is available on the Second Mace, Squirrel Creek, Silver Circle, Dome Rock and South Creek trails.

**MOTORIZED TRAIL RIDING :** ATVs are permitted on the Second Mace, Squirrel Creek, Silver Circle trails.

**Ophir Creek Road**  
From the campground

follow Ophir Creek Forest Service Road #360 12 miles, then turn left on Greenhorn Forest Service Road #369, which continues another 13 miles. Trailheads along this road include the Cisneros, 9 miles in on FSR# 369, Pole Creek, and the western trailhead of Barlett Trail at nearly 17 miles along #369. From the origin at the Ophir Campground to elevations above 11,000 ft., witness a beautifully changing variety of wildflowers culminating with abundant purple Wild Lupine scattered among the deep forest green of towering Poderosa Pine.

For the very determined, continue on FSR #369 and spend the afternoon fishing in the remote and

peaceful alpine lakes at 11,2200 feet.s.

**Greenhorn Meadows Campground-**

Located on highway 165, just a few miles from from the I-25 exit. The campground has 15 RV sites with electricity and numerous tent sites, city water, full shower and bathroom facilities, a gazebo and a cave if you can find it!

**St. Charles Campground-**

Located about 40 miles southwest of Pueblo near Lake Isabel, the elevation is 8,800 feet. Fifteen campsites suitable for both RVs and tents. About one mile to Lake Isabel from the campground. No hookups for RVs. Ten of the campsites are reservable and five available on a first come/first serve basis.

The campground is one of three in the San Isabel Recreation Area. Firewood is available for a fee. The nearby community of San Isabel offers limited groceries, paddle and row-boat rentals and a small restaurant for a cooks night out.

Hiking-Snow Slide Trail - 5 miles/Cisneros Trail - 15 miles

Fishing-Brown and Rainbow trout in the reservoir and Brook trout in the St. Charles headwaters. Open

Memorial Day through Labor Day weekend.

Directions-From Colorado City, CO, take State Rt. 165 west 12.2 miles to San Isabel Recreation Area sign. Turn left at sign and go 1.1 miles to campground sign. Turn left at sign and go 0.3 miles to another campground sign. Turn right at sign into campground.

**Davenport Campground-**

Davenport campground stretches along Squirrel Creek among spruce and Aspen at an elevation of 8,500 ft. Widely spaced sites provide a spacious feeling and privacy. The camp ground is primarily for tent camping,

Hiking-Squirrel Creek Trail #1384 (foot, horse, mountain bike & dirt bike) - 4.5 miles, Second Mace Trail #1322 (foot, horse, mountain bike & dirt bike) - 7 miles

Fishing-Brook trout  
Directions-From Colorado City, CO, take State Rt. 165 west 18.2 miles to campground sign (Forest Rt. 382). Turn left at sign onto Rt. 382 (dirt, single-lane with turnouts) and go 1.4 miles to campground.

**Pueblo South/Colorado City KOA-** RV camping, as well as several cabin types to choose from. Pool, hot tub miniature golf, and a social hall for reunions and parties.

*(This is bear country; practice safe food storage techniques.)*

**All the usual reasons to invest with Edward Jones. Plus one.**

Now investors in Colorado City & Rye have one more reason to feel confident about their financial future. Contact Financial Advisor Kevin Maroney and experience how Edward Jones makes sense of investing.

**Kevin R Maroney, AAMS®**  
Financial Advisor

4491 Bent Brothers Blvd Ste G  
Colorado City, CO 81019  
719-676-2248

[www.edwardjones.com](http://www.edwardjones.com)  
Member SIPC

**Edward Jones**  
MAKING SENSE OF INVESTING

**WE CAN MAKE YOU SMARTER ABOUT YOUR OPTIONS**

Get smart about your coverage!  
**719.676.3900**

**David Chucka**  
Your Local Farmers Agent  
1 NORTH PKWY  
COLORADO CITY, CO 81019  
DCHUCKA@FARMERSAGENT.COM

**GLOEGE ELECTRIC, LLC**  
7854 Greenhorn Road  
Rye, Colorado 81069

**Jeff Gloege**  
Owner  
jgloege23@gmail.com

Licensed, Insured 30 years experience  
**719-924-2668**

# Experience the Graneros Gorge

Under Parks and Recreation the Graneros Gorge, approximately 20 acres, is designated for citizens of the Greenhorn Valley, Pueblo County and all visitors to our area. Many types of recreation are prescribed such as picnic, biking, hiking, horse back riding, photographs or walking. The site is listed in the Frontier Pathways Scenic and Historic Byways publication.

The Gorge is located on the east side of Interstate Highway 25 at exit 71 south of Colorado City. There is signage indicating you are close to the entrance. At the sign turn north proceeding .3 mile on frontage road then turn east through barbed wire fence opening. The road is not maintained so beware of pot holes and ditches. At .3 mile the road will fork. Take the fork on right and follow it for about .6 mile. It will come near the edge of gorge and you will reach a connecting dirt road (well traveled) that goes to right for .2 mile. Turn right and park. Walk a hundred yards south towards gorge and you will see the remains of a gazebo built in the thirties situated on the very edge overlooking the gorge.

The view is awesome and breathtaking. It gives you pause to ponder Mother earth's magical spirits that are present.

The Graneros Gorge is documented as a prehistoric site (Bellwood site AD 395-505, Wikipedia) and also listed in the Pre-Historic Site List in Colorado.

Discoveries by archaeological digs indicate early indigenous inhabitants were of the "woodland and plains culture" and frequented there before 1250 AD (Prof Arnold Withers of Denver). There is speculation that the skeletal remains of the great Comanche Chief Cuerno Verde (Greenhorn) may have possibly been unearthed in what is believed to be an old Indian burial ground. Documented verification is ongoing. The site has more than likely been visited by Ute, Kiowa, Apache, Comanche and various military expeditions both Spanish and American over the centuries.

Also for the delight of visitors, there is an abundance of wildlife. Depending on the season and human traffic you may be fortunate to encounter antelope, deer, bear, squirrel, chipmunk, lizards, snake, bobcat, mountain lion, hawk, falcon, eagle both Bald and Golden. The cliff edge is ideal for the vulture and bird of prey to draft on air currents rising from the bottom. Bring along a pair



of binoculars to observe these creatures riding the winds.

Be aware that all birds of prey are protected by state and federal laws with stiff penalties for disturbing them. Fire arms are prohibited!

When exploring the rim of gorge use caution, there are loose rocks and boulders and falls have occurred. Take your time.

Also there are plenty of cacti: Prickly Pear, Ball, Cholla, and spiked yucca. Boots are recommended.

As you weave and wander among the rocks you are bound to come across ancient dwarfed Cedar Trees hugging crevasses or hanging precariously between giant sandstone boulders about to tip into the gorge. You can almost see the eons of weather on

their solidified lichen crusted trunks.

Hiking down into the gorge, however, is not recommended for it is privately owned and trespassers will be prosecuted. Parks and Recreation advises you not to litter and to take all trash out with you when you leave.

Enjoy the view, photographs won't do it justice!

**U-Haul**  
Under New Management  
Boxes & Accessories



**See us for  
all of your  
moving  
needs**

**719-396-9095**

**4708 W. Graneros Rd - Colorado City**  
**uglassrye@gmail.com**

*8375 Old San Isabel*



Feast your eyes upon this uniquely luxurious mountain log home showcasing over 4,200 square feet nestled amongst 35 acres of woodland nirvana. This masterpiece is constructed from Canadian Lodgepole Pines sourced directly from Lodgepole, Canada. This elegant custom home offers unparalleled craftsmanship and exceptional amenities; from the flagstone and hardwood floors, to the gable windows, to the antler chandeliers. Enjoy an open, spacious floor plan and spectacular 360-degree views.

Relax in your own enclosed jacuzzi overlooking the Wet Mountain Range, or roast marshmallows on the firepit while drowning in the natural ambience of the waterfall feature running into the Koi pond! South Muddy Creek runs through the property! The 60 x 80 barn makes a fabulous toybox!



**SOUTHERN COLORADO REAL ESTATE BROKERS**  
**6766 HIGHWAY 165**  
**OFFICE: 719-676-4477**  
**EMAIL: RICHARD@SOCOREB.COM**

# Festivals, Festivals and More Festivals



The **Rye/Colorado City Saddle Club** offers fast fun every Tuesday evening beginning at 6:30pm through Aug 7, at the arena off Highway 165 and Cuerno Verde Drive. Beulah offers a variety of events including their **Valleywide Garage**

**Sale** on June 22 from 9am-4pm. Maps are available at The Market in downtown Beulah; The local quilters, **Scrappy Ladies Quilting Guild**, will have their show on July 6-7 at the La Veta Community Center, from 10am - 4pm. Their raffle

will be held on July 8th. The **Sangre de Cristo Volunteers for Community Annual Yard Sale** is July 12-14, 8am - 5pm. at Peaks to Prairie Activity Center, 4705 Santa Fe Drive in Colorado City. On the 3-4th of August hit the annual **Beulah**

the all-day event, including preparation of a bar-b-que pit holding eight pick-up loads of firewood to cook 500 pounds of pork. Meals include pulled-pork sandwiches and hotdogs with all the trimmings, cold drinks, entertainment, and games. Make the picnic part of your summer plans, and your annual tradition. All you need to bring is your lawn chair!

The **Beulah Melodrama** on July 26-28, and August 2-4 beginning at 6:30 p.m. at the Beulah Community Center;

On Saturday, August 27, the annual **Mountain Aire Festival**, will be held at Christenson's

Brush Canyon Ranch on the Old San Isabel Road, in Rye. 4pm: Dinner of

Steak or Cornish Hens and free hot dogs for the kids, ans Silent Auction, 6 pm: Live Auction including many wonderful handcrafted items.

The **Colorado State Fair**, August 25-September 4, Pueblo State Fairgrounds.

**Chile & Frijoles Festival**- September 22-24, Pueblo

October offers the annual **Fall Festival** held at the Rye Home United Methodist Church from Lunch Menu includes grilled hamburgers and hot dogs. The event features a Bake Sale, carnival games, pumpkin decorating contest and a 4-H petting zoo.

On Saturday, October 12, the **Annual Lions Club Car Show and Craft Fair** is from 10am-3pm. Hundreds of vintage and collectors models, music, a bar-b-que and a variety of vendors make this a fun day in the Greenhorn Meadows Park. There will be plaques and a Best of show Trophy awarded.

*See the entire summer calendar on page four, including the Hollydot Golf Course Tournament schedule, and ongoing day trips and events at the Nature and Wildlife Discovery Center, [www.hikeandlearn.org](http://www.hikeandlearn.org)*



*"Whether you are buying a home or selling a home I am ready to be your Realtor"*



**Sarah Hunter**  
REALTOR®

**719-214-1438**

[sarah.hunter@exprealty.com](mailto:sarah.hunter@exprealty.com)  
[www.sarahhunter.exprealty.com](http://www.sarahhunter.exprealty.com)



[www.facebook.com/SarahSellsSouthernColorado.com](http://www.facebook.com/SarahSellsSouthernColorado.com)



**"We repair all-makes & offer the finest digital hearing aids at a much lower cost than you'd pay elsewhere!"**

*"Like us on Face Book!"*

- No-Cost Hearing Test
- Assistive Listening Devices
- Quality Digital Hearing Aids
- Double-Life Batteries
- Full Service Repair Lab
- Generous Trade Credit

**Hearing Aid Lab**  
*"Hear More, Pay Less!"*  
4491 Bent Bros. Blvd, Ste F—Colorado City  
**Call (719)676-4327 Today!**



# See the Art of the Car this Summer at Arts Center

"Luster: Realism and Hyperrealism in Contemporary Automobile and Motorcycle Painting," runs June - September 29, 2019 and is comprised of over 55 paintings by 15 of today's realists and hyperrealists who specialize in automobiles and motorcycles as their primary subject. Artists include (in alphabetical order): A.D. Cook (Las Vegas, NV), Randy Ford (Eastampton, NJ), Allan Gorman (West Orange, NJ), Marc G. Jones (Loveland, CO), Cheryl Kelley (Northern California), Richard Lewis (Los Angeles, CA), Lory Lockwood (New Orleans, LA), Robert Petillo (Hardyston, NJ), Kris Preslan (Lake Oswego, OR), Joseph Santos (Buena Park, CA), Ken Scaglia (Weston, CT), John E. Schaeffer (La Grange, TX), Guenevere "Moto Painter" Schwien (Portland, OR), and Harold Zabady (Camp Hill, PA). Their work exemplifies the very best of automotive painting being done today, and builds on that of the first wave of photo-realists in the '60's and '70's, which included the likes of Harold Cleworth, Don Eddy, Richard Estes, and Ralph Goings.

Like the shiny automobiles and motorcycles portrayed by the exhibit's artists, this exhibit's paintings can be characterized by the luster that permeates their imagery. Chrome ornamentation and trim together with enameled bodywork, glass, and interior fabrication to meet the needs of purpose-built vehicles of all sorts: these are the surfaces which recent realists and hyperrealists have exploited to generate true, virtuosic masterpieces. Serving as curator for "Luster: Realism and Hyperrealism in Contemporary Automobile and Motorcycle Painting," is David J. Wagner, who earned his Ph.D. in American Studies and served as a museum director for 20 years.

"Luster" is sponsored by The Robert Hoag

Rawlings Foundation, Dr. Jarvis & Mary Jo Ryals, The Jackson Foundation, Pueblo Toyota, Wendy & Dr. Barry Rapp, The Walter & Lucille Timme Foundation, Carolyn Jackson, The Bob & Doris Johnston Foundation, Carolyn Jackson, Dr Richard & Joyce Lawrence, Mona Askwig, Dan & Kerry DeRose, Bill & Elaine Nicoll, John Oechsle in memory of Ing Oechsle, Banner & Bower, P.C., Drs. Gregorio & Haydee Kort, Kathy Farley & Fran McClave, Dr. Chris & Judy Stjernholm, Dr. Carl & Kay Bartecchi, Ted & Sylvia Clair, Drs. Bob & Sara Tonsing, and KPHT 95.5. Additionally sponsored by D&S Paint Center, Pueblo Community College Automotive Department, Pueblo City-County Library District, and Stifel. **Companion exhibits include:**

"The Timme Collection: Motorcycles & Ephemera from the Forney Museum of Transportation," June 8 - September 15, 2019 which represents the array and vastness of items from Walt Timme's motorcycle dealership - a fixture in Downtown Pueblo for almost 65 years.

Forney Museum of Transportation after his death in 2005 by the Walter and Lucille Timme Foundation. He belonged to the Antique Motorcycle Club of America, and he and his wife Lucille were inducted as a couple into a Motorcycle Hall of Fame.

"All Aboard! The Art and Craft of Model Railroading," May 25 - September 1, 2019, featuring to-scale model trains representing many different types of locomotives, train cars, and railroads along with models, photographs, railroad signs, and other pieces from the collections of the Pueblo Model Railroad Association, Colorado Model Railroad Museum (Greeley, CO) and Steelworks Center of the West (Pueblo).

"Models and Miniatures: A Collection from the Forney Museum of Transportation," June 1 -

September 8, 2019, with everything from pre-war matchbox-sized to kid-sized pedal cars, die cast replicas and showroom giveaways, this exhibit will delight kids from 1 to 100.

"A Lifetime Passion," May 18, 2019 - August 25, 2019, portraying photographs and ephemera from the collection of Dabney T. Collins. Collins, a mechanic, engineer, importer, and race-car driver, was imbued with a passion for cars and all things that went fast.

"Amy Winter: The Heart of Our Nature," May 18 - August 18, 2019, featuring the Denver artist's paintings which give voice to the powerful beauty of the west and its residents and evoke fluidity and speed and the joy that comes with movement. Amy Winter is the 2018 winner of the People's Choice Award from the "Representing the West: A New Frontier exhibition."

**Special Events:** Friday, June 7, 2019, 6:00 pm | 47th Anniversary Gala and opening night of "Luster" | \$125 tickets Saturday, June 8, 2019 | 11:30 am | Coffee with Artists Richard Lewis and Marc Jones



Courtesy Photo

Indian Summer by A.D. Cook

Hear from artists from the "Luster" exhibit about their process and subjects. Program included in price of admission.

Sunday, June 16, 2019, 12pm - 4 pm | Community Pay-As-You-Can Day ("Luster" half price this day) Pay As You Can admission is made possible by the Southern Colorado Community Foundation and David Jackson in honor of Bob Jackson. Sat, June 29, 2019 at 2pm | Art Lecture: Harley Davidson Calendar in Pueblo by Gregory Howell

Harley-Davidson, Pueblo, and many of its iconic historic structures have gone global! Program included in price of admission.

Sunday, August 11, 2019, 12pm - 4 pm | Community Pay-As-You-Can Day & First Responder Day "Luster" half price this day. Pay-As-You-Can admission is made possible by the W. Brett Kelly Trust.

**Arts Center hours: Mon-Sat 10 am - 5 pm, Sun 12 - 4 pm. Admission is \$10 for adults, \$8 for children, military, and seniors 65+. Visit [sdc-arts.org](http://sdc-arts.org)**

**80 TWENTY WINES**

Where 80% of the wines are \$20 or Less

**415 N. Greenwood Suite C ~ Pueblo**

**543.WINE (9463)**

**80/twentywines.com**

# Bishop's Castle



ly intended to be a family project to build a cottage. After Bishop surrounded the cottage with rocks, several neighbors noted that the structure looked something like a castle.

According to Roadsideamerica, "for most" of the 40 years he has worked on the castle "Bishop was engaged in a running battle with Washington bureaucrats over the rocks that he used," which came from the National Forest surrounding his property. "Bishop felt that they were his for the taking, the government wanted to charge him per truckload." That dispute has been settled. In 1996, he was challenged by the local and state government over unsanctioned road signs that pointed to the site. They settled the dispute by issuing official road signs.

The site has become a tourist attraction, and Roadsideamerica.com devoted a chapter to the castle and rated it "major fun" and describing it as, "one man's massive-obsessive labor of medieval fantasy construction" But it also issued a "parent's alert," warning that Bishop has strong beliefs.

Located on Highway 165 in the Wet Mountains about five miles north of San Isabel, Bishop's Castle was begun in 1969, and for 40 years, Jim Bishop has been building the castle in the mountainside, himself.

Bishop estimates that every year since then he has gathered and placed over a 1000 ton of rock a year. "I always wanted a castle," he says. Every man wants a castle." At it's tallest point the castle is approximately 160 feet tall.

Visitors can climb steep steps or they can enter

from behind to the second floor. Each level has hand-wrought iron staircases and other details. The grand ballroom is one of the most impressive features. Unique pieces of stained glass decorate the windows. A dragon sits atop one of the towers. A balcony surrounds large portions of the castle.

The entire sight is free although donation jars are available. The site is open seven days a week from

Bishop bought the land for the site for \$450 when he was 15, and construction on what was original-

# The Historic Marion Mine Hike



The hike to the Marion Mine starts by going up the Cisneros Trail starting at the back end of the St. Charles campground at Lake Isabel. There is a \$6 day fee to get into the area, although you can park in the San Isabel area and walk to the trailhead. Even in 80 degree and sunny weather, it is always a good idea to take rain gear. Rain showers are common and can leave a hiker in danger on a shaded hike. The rain showers and year-round deep shade from surrounding rock formations also add interesting variety to the foliage, as Oregon-like ferns and mosses are abundant at the higher areas.

The hike is mostly in trees with the sun occasionally peeking through. About 10 minutes into the hike it gets steep and stays that way for about ten minutes. Not a long time but definitely a test of your hiking lungs at higher elevations.

After half an hour you enter an area with tall aspen lining both sides of the path. After spending about ten minutes here you come to a sign where the trail splits. If you go left you stay on the Cisneros trail. We went straight ahead toward the Marion Mine.

The trail gets steeper again at the 45 minute mark. The rock wall on the right is impressive and

you can hear water to the left side of the trail. A few minutes later you come to a small cabin on private property right on the stream. What a place to spend the night. The trail then steepens again at this point.

Approximately one hour into the hike you come to the Marion Mine. The shaft is covered to keep people out and of course it is in disrepair, but you can certainly see why it is located there.

The "valuables" here are not in the mine. Cross the small stream near a small waterfall and take a left along a huge rock wall.

This is where the wall blocks the sun and a different microclimate exists. Ferns grow out of the rock wall. Mushrooms cling to the steep slope. Moss is everywhere.

If you go to the right after you cross the water and hug the wall you come to an even larger, more impressive waterfall. Make sure to be careful on the slag from the mine. It gives easily.


You can climb further up the rocks beside the waterfall to find a variety of other waterfalls of differing sizes and volume. For anyone interested in a beautiful hike, and destination, the Marion Mine is still producing-the beauty of nature.

## MOUNTAIN DISPOSAL

719-489-3456 INC

**LOCALLY OWNED AND OPERATED**

Residential Service • Totes Available • Dumpsters  
Construction Rolloffs • Special Pick-Ups • Port-A-Toilets



**JIM & LISA KLIPFEL, OWNERS**  
OFFICE: 719-489-3456 • CELL: 719-251-2111  
P.O. BOX 20230 • COLORADO CITY, COLORADO 81019

# Great Sand Dunes National Park



Less than two hours from Max's Place in Colorado City is the Great Sand Dunes National Park and Preserve, a United States National Park located in the San Luis Valley. The Great Sand Dunes sit on a large area of "High Desert" land just west of the Sangre De Cristo Mountains.

The park includes 44,246 acres (17,906 ha), and the preserve protects an additional 41,686 acres with the tallest sand dunes in North America, rising to a maximum height of 750 feet.

There are several streams flowing on the perimeter of the dunes. Digging a couple inches into the dunes even at their peaks reveals wet sand.

The kid in every visitor

loves to sled down the sand year-round. Aside from the dunes, you'll find picnicking, hiking and camping opportunities, the challenging four-wheel scenic drive on Medano Pass, horseback-riding trails, the mysteriously appearing and disappearing Medano Creek, ranger-led nature walks and a couple of 14,000- and 13,000-foot peaks to climb (Crestone Needle, Crestone Peak, Cleveland Peak and Mount Herard).

The park's elevation (8,200 feet) and rural location make it a favorite with dark-sky-loving stargazers, and park even offers special astronomy

that are free and available on a first-come, first-served basis.

For those willing to haul their gear and everything else needed in backpacks, free backcountry permits (required) are available at the park's visitor center. You can pitch your tent anywhere in the 30-square-foot dunefield that lies outside the day-use area. You'll have a minimum hike of 1.5 miles over the dunes, but will

tains along the Sand Ramp Trail within the park, where the dunes give way to the mountains.

There are also several private and public campgrounds within an hour's drive of the park, including those at San Luis State Park.

The summer temperatures of this area are not typical of normal high desert lands although temperatures above 95 °F (35 °C) are not uncommon in July and August. The large variation between high and low temperatures are typical of the high desert climate. Low temperatures during winter nights can be exceedingly cold, with several night temperatures dropping below 0 °F (-18 °C) in the winter.

Precipitation averages just above 11 inches (280 mm) of rainfall per year. The high evaporation rates on the dunes qualify the area as desert land. It does snow on the dunes as well, but snowfall is usually very short-lived in the dry and sunny climate that is common in this area of Colorado.

*Excerpts from Wikipedia, the free encyclopedia*



programs many evenings May–September. .

For those traveling in 4WD vehicles, there are 21 campsites along Medano Pass Road within the park

experience a unique overnight setting.

Backpacking (with a permit) is also available amid the foothills and moun-

Three Sisters

Specializing in Colorado Cuisine

Tavern & Grill

SUMMER HOURS

SUNDAY-THURSDAY

11AM - 9PM

FRIDAY & SATURDAY

11AM - 10PM

Southern Colorado's best kept secret

6695 W. Hwy 165 COLORADO CITY, CO 81019 (719) 676-2276

GREG COLLINS  
OR  
DAVID WEAVER

719-406-1038

1841 S PUEBLO BLVD, PUEBLO, CO 81005

WWW.BAMBAMFIREARMS.COM

David Douglas

REALTOR®

(719) 602-2051 (personal)  
homeadvisor@kw.com  
www.homeadvisor.kw.com

Keller Williams Performance Realty  
1524 Fortino Blvd., Pueblo, CO 81008  
(719) 583-1100  
Each office is independently owned and operated

# HELLO SUMMER

## On the Pueblo Riverwalk

### What's Happening

- **Boat Opening Weekend Presented by Bank of the San Juans:** Friday, May 3 from 4-8 PM & Saturday, May 4 from 11 AM-8 PM. Enjoy \$2 boat rides, live music, tasty food and Pueblo Toyota's Pedal Boat Launch Party! Visit the Pueblo Riverwalk Facebook page for additional details.
- **Boat Operations:** Now open for regular operation Wednesday through Sunday. Visit [puebloriverwalk.org](http://puebloriverwalk.org) for the schedule, costs, and daily discounts.
- **Discount Cards:** Receive discounts on Excursion Boat Rides, Facility Rentals, Twenty One Steak, Angelo's, Table 67, Brues Alehouse, and River's Edge Salon & Nails. Come by our office to purchase yours today!



- **May 3:** First Friday Art Walk Maken' Take
- **May 6:** Monday Mala Making
- **May 15:** Chakra Bracelet and Oil Roller
- **May 21:** Hello Felted Flower Hoop
- **May 23:** Needle Felted Bluebird
- Register in advance at [squareup.com/store/collectivepueblo](http://squareup.com/store/collectivepueblo)



**Craft & Cocktails:** May 9th from 6-9 PM. Enjoy making cards for Mother's Day, Graduation & Wedding season. Tickets are \$30 per person and can be purchased by calling 719-569-7904.

**Third Thursday Storytelling (May 16th):** The story of Andrew McClelland, founder of the First Library in Pueblo. Doors open at 6:00 PM & Storytelling begins at 7 PM. Call 719-569-7904 to make a reservation (\$5 cover charge).



**Mother's Day (May 12th):** Enjoy a delicious Sunday brunch from 11 AM-3PM overlooking the beautiful Riverwalk. Call 719-404-4444.

Have your next event at this beautiful location. Visit [waterfrontpueblo.com](http://waterfrontpueblo.com) for details.

### Restaurant Specials & Events



- **After 21 Event:** May 4th. Doors open at 10 PM and close at 1 AM. DJ Black Diamond will be there with bartender Kenny White.
- **Food & Wine Dinners:** Sunday, May 26 with a Southern France theme.



- **Every Thursday:** All you can eat Prime Rib Buffet for \$23.95
- **All you can eat Sunday brunch!** Every Sunday starting at 10 AM. Each week will feature something new to the menu. Treat Mom to a special Sunday brunch on Mother's Day May 12.
- **Now open for lunch Tuesday through Saturday!** Stay late and enjoy 1/2 price cocktails from 3PM-5PM
- **Live music every Friday and Saturday** starting at 6 PM.



- Try out the new Bellatrix beer. Aged in tequila barrels for 11 months and then fermented on well over 300lbs of Strawberry and West African Hibiscus.
- **Live music performances for the month include:** Leilanie Wolfgramm, Beyond Bridges, Heartland Trio, The Late Ones, and Maoli & Nattali Rize.



- **Family Night on Monday's & Tuesday's.** Share a 19" pizza with 2 toppings, a family salad and a pitcher of soda for \$35.99.
- **Deep dish special with 2 toppings & a pitcher of Bud Light** for \$29.00.

### Shops on the Riverwalk



- \$50 full set & pedicure
- \$20 chair massage (30 minutes)
- 20% off a 60-90 minute full body massage.
- Call 719-544-0713 to book an appointment.



- **Graduation specials!** Order your customized balloon bouquet in advance or create a personalized gift. Call 719-994-5442 to get started or visit their location on the Riverwalk near the Welcome Center.

Join our text messaging list  
**TEXT: PuebloRiverwalk**  
**TO: 555888**



Follow us on social media  
  @puebloriverwalk