

*Free*



## **Bring on the Summer with these Greenhorn Valley Destinations**

*Whether you're new to the area or you have tried-and-true vacation plans, it's time to get out and explore. Let us help you unplug, unwind and spend some down time in the natural beauty of the Greenhorn Valley.*

# SUMMER GUIDE 2024

### **May ~ October Calendar of Events**

*If you're looking for a festival, plan your visit around one of these summer events*

### **2024 Greenhorn Valley Summer Guide**

*Your guide to area hiking, camping,  
dining, and entertainment*

---

*Published by and as a supplement to the Greenhorn Valley View  
editor@greenhornvalleyview.com*

## Stay and Play in the Greenhorn Valley!



**May 27, LTC Fred A. Ettleman Post 7305 VFW Memorial Service**, 9am, Colorado City Cemetery, E. Jefferson Street, right on Sandy Court  
**June 4, Opening Day at the Colorado City Parks and Recreation Swimming Pool**, 5000 Cuerno Verde Rd, Colorado City.  
**Open Swim:** Tues - Sat, 12:30 - 4:30pm, Monday, 6-8pm. Daily admission - \$4.

Lap Swim: Mon - Fri, 7:30 to 8:30am, Evening Lap Swim: Mon. 5-6:00pm.  
 Aerobics: Mon - Fri, 8:30 to 9:30am. 719-676-3059  
**June 8, Friends of Hollydot Golf Tournament**, Hollydot Golf Course, Colorado City 719-676-3341  
**June 14 - July 7, Shakespeare in the Sangres**, Jones Theater, 116 W. 2nd Street, Westcliffe, CO, Jonestheater.com

**June 15, Bantam Football Golf Tournament**, Hollydot Golf Course, Colo City 719-676-3341  
**June 29, Greenhorn Valley Days-** Greenhorn Meadows Park - Colorado City  
**July 4, LTC Fred A. Ettleman Post 7305 VFW- Veterans, Active Military & Family 4th of July Picnic** - noon, Greenhorn Meadows Park - 676-2375  
**July 4, Independence Day Parade** - 10am-11pm, Main Street, Westcliffe.  
**July 11-14, High Mountain Hayfever Bluegrass Festival**, Bluff & Summit Park, Westcliffe - highmountainhayfever.org  
**July 12-21, Pueblo County Fair - Pueblo**  
**July 13, Annual Mountain Aire Festival at Brush Canyon Ranch**, 4:00pm. Tickets include dinner and a live auction, available at

the door. Old San Isabel Road, Rye, CO  
**July 20-26, Valley Community Church Vacation Bible School**, 4253 Mercantile St. Colorado City, PreK-5th Grade, 719-676-3830. *See ad p. 21*  
**August 2-4, Annual Beulah Arts & Crafts Show-** Beulah School of Natural Science, www.beulahvalleyartscouncil.org  
**August 10, 2024 Rye Town Square Fair**, 11am-4pm Main Street, Rye  
**August 10, Greenhorn Valley Chamber of Commerce Golf Tournament**, Hollydot Golf Course, Colorado City 719-676-3341  
**August 17, SilverWest AirFest** - 7:30am-3:30pm, Butler Field, Westcliffe  
**August 24-25, Club Championship Golf Tournament**, Hollydot Golf Course, Colorado City 719-676-3341  
**August 28-September 1, Wet Mountain Weaver**

**Fiber Art Show and Sale**, 10am-5pm, Greenstone Artworks, 100 Main St. Westcliffe  
**September 8, Rye Booster Club Golf Tournament**, Hollydot Golf Course, Colorado City 719-676-3341  
**September 14, Annual High Peaks Music Festival-** Westcliffe highpeaks-musicfestival.org  
**September 20-22, Pueblo Chile & Frijoles Festival**, Historic Downtown Pueblo/Union Avenue  
**September 22, Men's Club Golf Tournament**, Hollydot Golf Course, Colorado City 719-676-3341  
**October 12, Annual CC/Rye Lions Club Annual Autumn Spooktacular Car Show**, 9am-3pm, Greenhorn Meadows Park. Alternate Storm Date, October 19  
**October 31, Halloween-town-** twilight, Main Street in Rye

Scott and Cindy Swartwood, Owner  
(719) 676-3348

4493 Bent Bros. Blvd.  
Colorado City  
Mon-Sat  
8am to 7pm

# VALLEY MARKET

**FULL MEAT DEPARTMENT**  
**FEATURING**  
**CHOICE CERTIFIED**  
**HEREFORD BEEF**

**GROCERIES PRODUCE BAKERY**

**Stop by for all your Camping Needs!**

~ TAKE EXIT 74 TO HWY 165 ~  
 ~ TURN RIGHT ON BENT BROTHERS BLVD  
 JUST PAST LOAF 'N JUG ~  
 ~ TAKE A LEFT JUST BEFORE THE FIRE STATION ~

## BH<sup>2</sup> Land Surveying, LLC

**William S. Bechaver**  
 Professional Land Surveyor  
 25 years of experience

PO Box 20399  
 Colorado City, CO 81019  
 719.676.2072  
 bh2@ghvalley.net

**BEE SASSY**  
 boutique

4490 Bent Brothers Blvd. 5B,  
 Colorado City, CO 81019  
 719 214 1438

## History of the Greenhorn Valley



Pictured is Old Oaken Bucken Famous well dug at Greenhorn which supposedly John Ashley helped dig.

Archibald Metcalf, Bill New and Marcelino Baca used the area near the crossing of the Taos Trail with Greenhorn Creek as a hunting camp for several

seasons in the early 1840's. In 1845 John Brown opened a store somewhere near Greenhorn Creek, although the location has not been located definitively.

In January of 1847, George Ruxton, an English Adventurer wrote a description of the Greenhorn settlement: "on a bluff overlooking the stream I had the satisfac-

tion of seeing two or three Indian lodges and one adobe hovel of a more aspiring order."

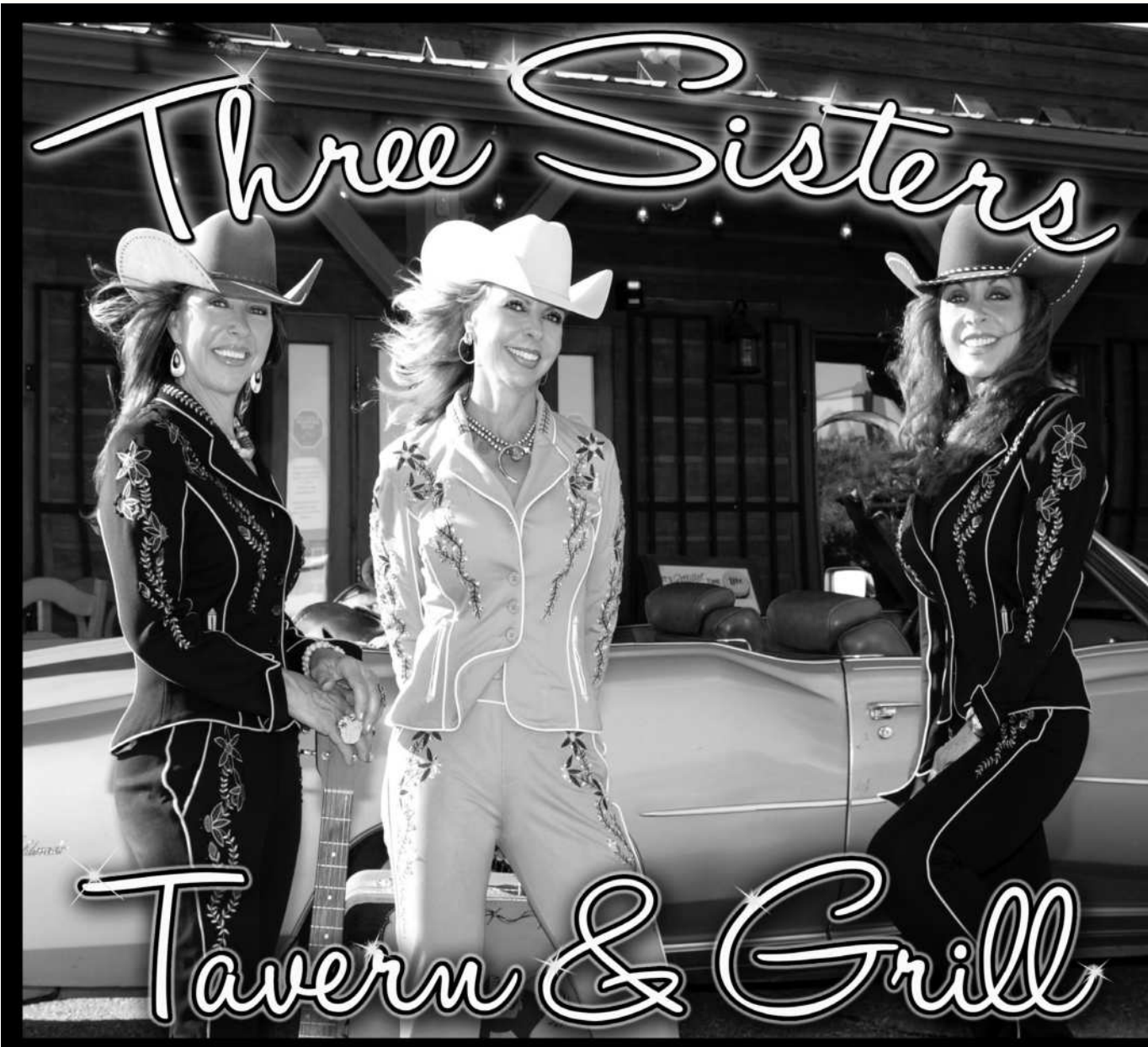
Later in 1847, John Albert arrived at what he called a small settlement on Greenhorn Creek after "a long hard ride from Taos. Before collapsing he whispered of the murder of Governor Bent and Lee, the Indian uprising and of being the only survivor of the massacre of Turley's mill."

When gold was discovered in California most of the earliest settlers in the Greenhorn Valley joined the Gold Rush west. When the Hicklins arrived

to claim their portion of the Cornelio Vigil and Ceran St. Vrain Land Grant the Valley was mostly deserted.

Once the Hicklins settled in the Valley, the area around their home became known as the Hicklin Settlement and although early maps show the settlement of Greenhorn in various spots, that name eventually became associated with George Sears' settlement five miles to the south and later became the Fossceco's Shady Greenhorn.

After the Civil War, families began heading west lured by the Homestead Act. In December of 1871, the Pueblo Chieftain reported 35 families had settled in the Greenhorn Valley.



### Three Sisters Tavern & Grill

6695 W. Hwy. 165  
(Just off 125 at Exit 74)  
Colorado City, CO 81019  
(719) 676-2276

breakfast is served 7:00 to 11:00am, and lunch & dinner are served from 11:00am to close

#### Hours

Sunday 7am - 8pm  
Monday 11am - 8pm  
Tuesday 11am - 8pm  
Wednesday 11am - 8pm  
Thursday 7am - 9pm  
Friday 7am - 9pm  
Saturday 7am - 9pm

## Dining with a view of the Greenhorn Mountains



**Bolt Burgers & Shakes** is a locally owned, fast casual eatery with a modern spin on the classic burger joint. The beef is fresh Angus, and the chicken is hand-battered and fried to perfection. The sauces and green Chile are made in house, and they offer over 30 flavors of milkshakes and malts! Check out the menu at

[www.boltburgersandshakes.com](http://www.boltburgersandshakes.com). Located at 6675 Highway 165, and can be reached at 719-676-6297  
**High Octane:** Our specialty is BBQ, steaks and pasta. Our BBQ comes from a 750-gallon oakwood barrel. We have a wide variety of comfort food and lots of side items. We also have a full bar. Watch sports on our total sports

package TV system. Dine on the patio or inside. 8900 S. I-25, Colorado City, high-octane bbq.com (719) 676-2440..  
**Ad p. 19**

**The Round Table at Hollydot** offers cool patio seating with a full view of the mountains, while you enjoy a burger or sandwich with fries, appetizers or a fresh salad. Breakfast Burritos and sandwiches also available for the early birds. 55 N Parkway Drive, Colorado City, CO. Open 7 days a week. 719-676-3300.

**Lodge at San Isabel** - newly remodeled restaurant, tentatively opening for the summer season. Please call 719-489-2280 for

hours and menu specialties. [sanisabellodging.com](http://sanisabellodging.com)

**Rye Café**, where old friends meet and new ones are made. Come visit the century old Cafe in Rye, CO. The Rye Cafe is nestled in the foothills of the Greenhorn mountains and is less than 10 miles from I-25 off of highway 165. Stop on in on your way to San Isabel, Bishop's Castle, or any of the other beautiful nearby areas. Make our quaint and cozy Cafe your go to spot for Pizza and more. 2115 Main St. Rye, CO. 81069 719-489-3131

**Subway Sandwiches at Fastbreak Convenience** offers a wide variety of hot or cold sandwiches, made just the way you like them. Located across from the Travel Center at exit 74.

**Three Sisters Tavern & Grill:** Truly delicious food and great service. The owners really are sisters and they make getting off I-25 worthwhile. For an unforgettable view take your meal outdoors or enjoy an ice-cold beer or glass of

wine at the bar. Hwy 165, Colorado City. 719-676-2276. **Ad p. 3**

**The Valley Grind** offers a delicious cup of coffee, Boba teas and Lattes, and iced or frozen drinks to meet anyone's tastes. The friendly and fast drive-through coffee shop is located in the Ace Hardware parking lot on highway 165. Daily Specials are posted at the drive-up window. 719-676-2905 **Ad p. 8**

**Valley Market- Fresh Deli** sandwiches, Chester Fried Chicken, or piping-hot Hunt Brothers Pizza may be just the thing as you begin your adventure in the Greenhorn Mountains. Stop in and stock up on cold drinks and all your camping needs. Open Mon - Sat, 8am-7pm, 719-676-3348. **Ad p. 2**

**Viktorio's Pizzeria:** has a wide variety of Italian and American menu items, with some big surprises for a small town. Join the pool tournament Friday or Karaoke on Saturday. Located on Bent Bros Blvd. in Colorado City. 719-676-4455


# LENDERS SO LOCAL

THEY KNOW YOUR

## SECRET FISHING SPOT.

---


**S**ome things are best kept secret. Like a favorite fishing hole. Others you want to tell the world. Like a favorite bank. Because when a place is this good you gotta share. So when you're ready to land the big one, come on in and chat. We have all the tackle you need.



**BANK OF THE SAN JUANS**  
DIVISION OF GLACIER BANK  
**ONE BIG HAPPY LITTLE BANK**

---

[WWW.BANKSANJUANS.COM](http://WWW.BANKSANJUANS.COM)  
 COLORADO CITY, FLORENCE, CAÑON CITY, PUEBLO, PUEBLO WEST



## THE PINES OF BEULAH

GUEST CABIN RENTALS



**8956 GRAND AVENUE ~ BEULAH, CO**  
**OWNERS ~ WALT & MARYANN VANLUE**  
**RESERVATIONS ~ (719) 485-7463**

## Colorado City Parks and Recreation 2024 Swimming Pool Schedule

5000 Cuerno Verde Rd. 676-3059

POOL OPENS: Tuesday, June 4  
POOL CLOSES: Saturday, August 3

OPEN SWIM HOURS: Tuesday- Saturday 12:30pm – 4:30pm  
Monday 6:00pm – 8:00pm

DAILY ADMISSIONS: Monday-Saturday \$4.00  
Punch Pass 12/\$40.00  
Children 2 and under FREE

SWIM LESSONS: Registration forms are available online at  
[www.colorado.gov/cocityparksandrec](http://www.colorado.gov/cocityparksandrec)

Each session is \$40.00 per student Session 1 is June 10 to June 20  
Session 2 is July 8 to July 18

LAP SWIM: Monday through Friday 7:30 to 8:30am  
EVENING LAP SWIM: Monday 5:00 to 6:00pm

AEROBICS: Monday through Friday 8:30 to 9:30am

*We rent for your event or party! Call us at 676-3059*

Pool Party Pricing: Based on a 2-hour party

Up to 25 Swimmers: \$100

26 to 50 Swimmers: \$150

51 to 75 Swimmers: \$200

76 to 100 Swimmers: \$250

**\*\*POOL SCHEDULE IS SUBJECT TO CHANGE\*\***

## Make Hollydot Golf Course your first stop

The 18-hole Hollydot Golf Course which celebrated its grand opening in May of 1973 is nestled in the Greenhorn Valley with the beautiful Greenhorn Mountains towering majestically as a background for the golf course located just 20 minutes south of Pueblo in Colorado City.

The Par 71 course has five different tee-off spots: Gold(6854 yards), Blue(6443 yards), White(6,000 yards), Red(5,000 yards), and Orange for Seniors (5,500 yards). The white was recently lengthened and the red was shortened slightly.

Hollydot Golf Course is very well run, well laid out, and the weather seems to be unusually co-operative. The course hosts tournaments throughout the season with local teams, as well as many from Pueblo and other surrounding communities.

The rates are very affordable, with junior, family and senior rates available. The Hollydot Pro Shop is filled with top notch golfing apparel and equipment to choose from. Just right for a gift if you have a golf enthusiast.

The Round Table Sports Grill allows diners a choice of the cool air-conditioned bar and restaurant or dining alfresco on the patio with a full view of the Greenhorn Mountains. Don't miss this relaxing experience.

You'll enjoy the interesting mix of small-town locals and golfers who travel from far and wide to play at Hollydot Golf Course. Helping keep Hollydot in top shape are the Friends of Hollydot, a non-profit volunteer organization that helps in a myriad of ways from painting, to picking up, cleaning, and just fulfilling their mission statement which is "to promote, support, and enhance the golf experience for the benefit of the community."



# HOLLYDOT

*Play 18 Hole Course*

*~Tuesday or Thursday~*

*\$35 ea w/cart*

*Foursome ~ \$30 ea*

*Call for Tee Times*

**Hollydot Golf Course**

55 North way Drive

COLORADO CITY

**719.676.3341**

**1.866.307.2792**

*Present receipt  
from a local Restaurant  
or Hotel/Campground  
and receive*

***Buy One  
Green Fee /  
Get One Free***

*Requires Cart  
Purchase*

### Rates for 2024 Annual Membership

\$550 for Primary

\$285 for Spouse

\$550 to use personal and/or Course Cart

\$70 for first under 18

\$15 for additional under 18

### Weekday Rates: Monday-Friday

18 holes/walking \$25 ~ With cart \$40

9 holes/walking \$15 ~ With cart \$25

### Weekend Rates:

18 holes/walking \$35 ~ With cart \$45

9 Holes/walking \$20 ~ With cart \$30

## Wet Mountain Hiking Trails



The Wet Mountains, also called the Greenhorn Mountains, are named for the amount of rain that has traditionally fallen on the range. Located within the San Isabel

National Forest, it covers an area of 220,000 acres and is part of the San Carlos Ranger District.

The Wet Mountains are one of Colorado's lower ranges

when compared to other major ranges in Colorado. It spans for fifty miles in a north-south direction beginning at the Arkansas River near Canon City and ending

at the Huerfano River just north of Walsenburg.

The dominant peaks are Greenhorn Mountain at 12,347 feet; North Peak at 12,220; St. Charles Peak at 11,784; and Deer Peak at 11,572. Approximately 22,000 acres of the Greenhorn Mountain, is protected by the Colorado Wilderness Act. This designation provides an atmosphere that seems virtually untouched by humans. It also has eliminated all motor vehicle traffic, limits the number of hikers during certain periods of time, and requires strict camping guidelines.

Lake San Isabel, a 40 acre reservoir, was created by the WPA in the 1930's entirely for recreation. Other interesting sites include the abandoned Marion Mine, Maes Creek Burn Out, Apache Falls, the Blue Lakes, Chicken Lookout Point, Marion Lake and Dome Rock. Elevations: start 8,000', high point 11,580', end 11,580'

### The Bartlett Trail #1310

Length: 12.1 miles, Rated: moderate, Use: summer and early fall; hiking, horseback riding

The Bartlett Trail is in the Greenhorn Wilderness Area, so wilderness rules and regulations apply (especially no mechanized vehicles, including mountain bikes and hang gliders). If hiking from the Rye end of the trail, it's a long way up to the junction with the South Apache Trail on the

southern shoulder of Greenhorn Mountain. At that junction, if you go north you'll come to the other trailhead for Bartlett. If you go south, you'll go deeper into the Wilderness Area. The Bartlett Trail skirts the upper part of Greenhorn Mountain by staying south and west of the upper mountain.

Access: The lower trailhead is south of Rye. Go through Rye on Main Street, turn left on Boulder, left again on Graneros Road, right on Hunter and right again on Baxter to the trailhead.

The upper trailhead is the same as for the Greenhorn Trail. Take SR 165 to Ophir Creek Forest Service Road #360. Go west for about 12 miles and then turn left on Greenhorn Mountain Road #369, go 17 miles to the parking area at the end of the road. USGS Maps: Rye, San Isabel

### The South Apache Trail #1311

Length: 4.3 miles, Rated: hard, Use: summer and fall; hiking, horseback riding. Elevations: start 9,600', high point 9,600', end: 7,300'

This trail is a hard drop off the eastern side of the Greenhorn Mountain Wilderness. The trail ends at private property so the only way out is to go back up that relentless hill. At the parking area at the end of the road, follow the signs for the Bartlett Trail. Follow the Bartlett Trail for about 5 miles to the junction with the South Apache Trail. Go right and follow the trail down the hill paralleling South Apache Creek.

Access: From State Highway 165, turn west at Ophir Creek Road (FR 360). Go about 12 miles and then turn left (south) on the Greenhorn Mountain Road #369. Go another 17 miles to the end of the road at the edge of Greenhorn Mountain Wilderness. USGS Maps: San Isabel, Rye, Badito Cone, Hayden Butte

### Cisneros Trail #1314

Length: 10.4 miles, Rated: moderate, Use: year around; hiking, horseback riding, mountain biking, ATV, Snowmobiling



## THERE'S NO PLACE LIKE HOME

Spanish Peaks Regional Health Center and Veterans Community Living Center has provided healthcare services to Huerfano County and beyond since 1963. Our present facility was constructed in 1993, and as we celebrated our 30th anniversary, we elevated sections of our main campus with a renovation.

Our team is honored to serve the residents and visitors of Huerfano County. Our commitment to providing exceptional healthcare services to the people is closely aligned with the needs of our community and we continue to prosper.

Our mission at Spanish Peaks is to "Improve the Lives We Touch." As our community has evolved over the years, we have identified and offered services to suit the needs of those who reside, work, and play in our beautiful region.

We welcome you to our community and want to reassure you that you are in good hands when visiting and enjoying the outdoors.

### Our Services Include:

- Ambulance
- Cardiopulmonary
- Clinics (Family, Specialty, Women's & Outreach)
- Diagnostic Imaging (Radiology)
- Emergency Department
- Infusion Therapy
- Inpatient Care
- Laboratory
- Mammography
- Rehabilitation Services (PT/OT/ST)
- Retail Pharmacy
- Surgery
- Swing Bed
- Veterans Community Living Center (120 Beds - CO. Residency is not a requirement)

### Meet Our Emergency Department Team:

Our Emergency Department is a Level IV Trauma Center with helicopter transportation open 24 hours a day, 365 days a year. Our team consists of Board-Certified Emergency Physicians with 20+ years of experience each, Trauma Nursing Core Course Certified Nurses, and EMT-B/ER Techs. Whether injury or illness, we are here for you!



Tom Griedanus, M.D. ED Medical Director  
George Yang, D.O.  
Jeremy Elias, D.O.



Chad Davis, M.D.  
Dawn Carlson, M.D.  
Walter West II, M.D.

23500 U.S. Hwy 160 Walsenburg, CO 81089

719.738.5100 website: sprhc.org



Presented by  
**The Craftsman Lodge**  
10950 Bartlett Trail  
Rye CO 81069

Phone: 719-489-3157 (Lodge)  
Mobile: 719-989-0853  
E-mail: [craftsmanlodge@gmail.com](mailto:craftsmanlodge@gmail.com)  
Web: [www.craftsmanlodge.com](http://www.craftsmanlodge.com)

Catherine M. Blanton  
Owner/Operator



See *Hiking* p. 23



## How will you KNOW? What will you DO? Pueblo County Mountain Community Preparedness 2024 Provided by the Rye Fire Protection District

**Pueblo County** uses Twenty First Century Communications for their Emergency Telephone Notifications System (ETNS).

- ★ Web-based
- ★ Telephone based backup system
- ★ On the fly or pre-recorded campaign
- ★ Map or Contact List launch
- ★ Detailed Reports

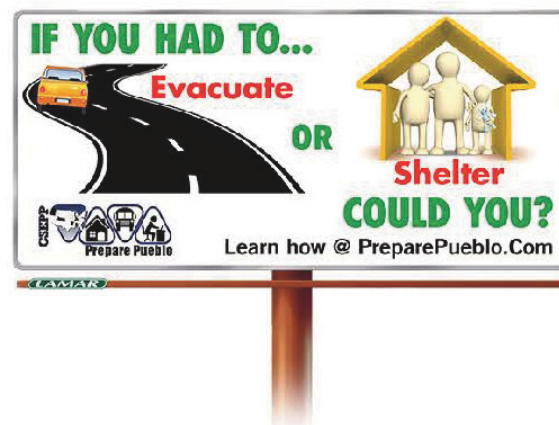
Home numbers are provided to the 911 center by local phone provider. Citizens can register their cellular phones or Voice over Internet (VoIP) phones at [www.pueblocountyoptin.com](http://www.pueblocountyoptin.com)

Aside from ETNS...First responders/officials notify via: Route Alerting (loud speaker patrol and door to door checks) telling residents to do one of two things.....

### Evacuate or Shelter-in-Place

During an evacuation you will be asked to secure your home and take your family and pets (if able to load quickly) away from the threat. This is most likely requested by officials during a flood or wild land fire.

If you are told to shelter-in-place, it is likely a chemical or weather event. During this time period staying indoors is how best to keep your family safe. Going to an interior room with no windows and turning off ventilation systems may be requested.



**The Pueblo County Sheriff's Office Emergency Services Center houses the 911 center as well as an Emergency Operations Center and a Joint Information Center.**

**During a community disaster, these centers will coordinate and order resources, manage situational awareness, and distribute public information.**

**You can be better prepared by taking some preparedness steps:**

Pack a 72 hour kit

Food, water, battery-operated flashlight and radio, tools, first aid kit, cash, plastic sheeting whistle, a change of clothes, duct tape, matches, etc. This kit will be important if you find yourself shut in for extended time periods with no electricity, but it is also a great item to grab if you have to evacuate quickly.

**Keep copies of your Vital Documents somewhere secure and easy to get to if you have to evacuate.**

Copies of....

- ★ Birth Certificates
- ★ Social Security cards
- ★ Drivers Licenses
- ★ Adoption Records
- ★ Wills
- ★ Insurance policies
- ★ Credit Cards
- ★ Credit, Investments, and Bank Account #'s
- ★ Titles, Deeds, Trusts



**Know where to go for information during an emergency**

#### **Social Media Accounts**

- ★ **PCSO Facebook**  
<https://www.facebook.com/pueblosheriff>
- ★ **Twitter@Pueblo Count SO**
- ★ **Twitter@Rye\_Fire\_Dist**

#### **Websites**

- ★ [www.puebloemergency.info](http://www.puebloemergency.info)
- ★ [www.ryefiredistrict.us](http://www.ryefiredistrict.us)

#### **Emergency Alert Station**

- ★ KCCY 96.9

## Colorado City/Rye Lions Club Autumn Spooktacular Car Show



**LTC FRED A. ETTLEMAN  
POST 7305**  
5445 Cuerno Verde Blvd.  
Colorado City/Rye  
821-0782 or 676-2375

### MEETING THE 3RD SATURDAY OF EACH MONTH



**LAKE BECKWITH MARINA**  
MEET & GREET 9AM - MEETING 10AM

**New Members:  
Dues are Free for the First Year**

**Activities we support:**

- Social Programs Walsenburg Veterans Home
- Annual Memorial Day Observance Colorado City Cemetery
- Buddy Poppy Distribution



**Supporting Veteran Services**



The 10th Annual Colorado City/Rye Lions Club Autumn Car Show and Craft Fair will be held on Saturday, October 12, 2024 beginning at 10:00 am to 3:00 pm. With an alternate wind/snow/rain date of October 19, 2024.

Registration for cars

will be from 9:00 am to 10:00 am. The registration fee is \$30 for cars and vendors.

The car show is

open to all years, makes and models of anything with wheels. Plaques will be awarded for the TOP 20 cars, a 1st place trophy for Stock Division - Best of Show and a 1st place trophy for Classic Division - Best of Show.

All participants are requested to bring a bag of candy for Trunk or Treat for the kids and there will

be an adult Halloween costume contest.

There will be music by a DJ, a 50/50 raffle, and door prizes every thirty minutes at this family event. The Lions Club Chuckwagon will be serving lunch.

There is no admission for spectators, although donations would be appreciated.

For over half a century the local Lions Club has served our community through a multitude of programs including meeting the visual needs of young children in our community, providing Christmas food & toy boxes for deserving families in our community and providing scholarships for Rye High School students.

**Mountain Blooms**  
BY LANEY

Brighten someone's day with our hand-crafted floral designs made just for you!  
Order for pick-up or delivery anywhere within the Greenhorn Valley.

We also offer a wide variety of unique gifts for all ages!

**Summer Workshops**

- May 8th Mother's Day Flower Pots
- June 20th Bright & Beautiful Summer Arrangement
- July 20th Summer Succulents
- August 23rd Back to School Bath Bombs

(719)334-5127  
2109 Main Street  
Rye, CO 81069  
mountainblooms.net  
Open Tuesday - Thursday 9am-6pm  
Friday & Saturday 10am-4pm

**The Valley Grind**

Now Serving  
**Boba Tea and Lattes**

Located in the Ace Hardware Parking Lot  
Delivery Available!  
Mon-Fri ~ 7 to 9am  
Call 719-676-2905

Open Monday - Friday  
5am to 3pm  
Saturday & Sunday  
7am to noon

4705 Santa Fe Drive - P.O. Box 19402, Colorado City, CO 81019 (719) 676-1011 [vfc@ghvalley.net](mailto:vfc@ghvalley.net)

**Are you planning something big for 2024?**

Wedding? Baby Shower? Golden Anniversary?  
Graduation? Other Celebration?

Celebrate with affordable rental rates and mountain views!

**Interested in holding a seminar or class?**

VFC also has classrooms and daytime or evening rentals.  
Call (719)676-1011 or (719)504-8018  
For rates and availability.



## GOAL HIGH SCHOOL

### VISIT US AT SOUTHERN COLORADO LOCATIONS NEARBY:

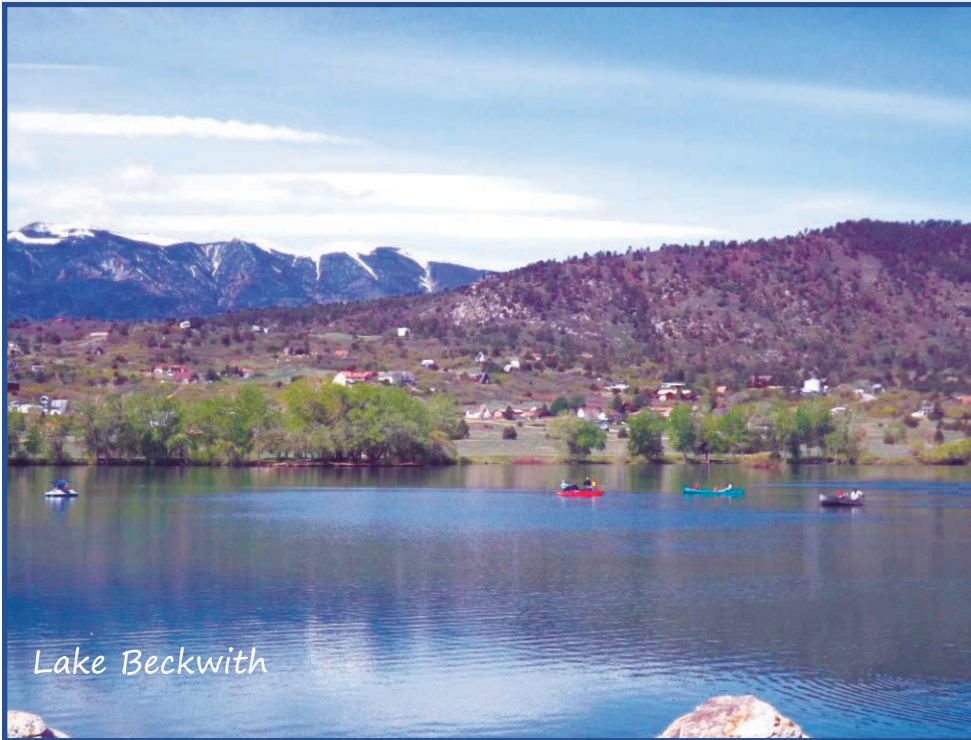
- ✓ **Pueblo Mall**  
3429 Dillon Dr., Suite E-7, Pueblo 81008
- ✓ **Pueblo Downtown**  
205 N. Santa Fe Ave., Pueblo 81003
- ✓ **Pueblo Regency**  
1861 S. Pueblo Blvd., Pueblo 81005
- ✓ **Walsenburg**  
525 Main St., Walsenburg 81089
- ✓ **Trinidad**  
326 N. Commercial St.,  
Suite 20, Trinidad 81082
- ✓ **Alamosa**  
6259 West Hwy 160,  
Unit A, Alamosa 81101

- **Free Public Online High School**
- **Free College Courses**
- **Senior Recovery Program**
- **CTE & Workforce Placement**
- **Inclusive School Culture**
- **Computer & Internet Provided**
- **Award winning eSports**
- **40 student drop-in centers statewide**



**GOALAC.ORG**  
**1-877-PRO-GOAL**

## Kayak, paddleboard or fish the day away at Lake Beckwith in Colorado City



Lake Beckwith

The naming of Lake Beckwith in Colorado City can be attributed to three possible men: some claim it was named for a Mr. Beckwith who enlarged the

small lake in the early 1900's; others attribute the name to a well-loved Dr. Beckwith who settled three miles east of Rye in 1876; and many associate the

the Greenhorn Settlement in the summer of 1853.

The expedition roughly followed the 38th parallel, through Kansas and up the Arkansas River. After they

name with Lieutenant (later Brigadier General) Edward Griffin Beckwith who led the Calvary escort for Captain Gunnison's ill-fated railroad surveying expedition and visited

left the Arkansas, Gunnison sent Lieutenant Beckwith out to find a guide to take them over the pass to Fort Massachusetts, the new military post in the San Luis Valley.

Beckwith found his way to the Greenhorn Settlement. He was greeted by Marcelino Baca and his Pawnee wife, whom Beckwith admired as a courteous lady of "matronly grace and dignity." Beckwith found six Mexican families living in a cluster of low adobe houses. For protection from the Utes, each house had a yard in front enclosed by poles planted in the ground, fastened to horizontal strips of wood with rawhide thongs. In back, a corral was made the same way.

Baca agreed to guide Gunnison's party to Fort

Massachusetts and Gunnison began the survey of a possible route, via the Huerfano River, through Cochetopa Pass. Captain Gunnison seeking to speed up the mapping divided his team into two detachments.

Gunnison and the eleven men in his group were attacked by a band of Paiute (Ute) Indians. Gunnison and seven of his men were killed. Survivors of the attack alerted the other detachment of the survey team led by Beckwith who rode hard to aid Gunnison and his party. Arriving too late, they buried the victims and Beckwith took the survivors to Salt Lake City to spend the winter of 1853-54.

# Do you own a private well?

Get the facts on forever chemicals and how to properly filter your drinking water!

Learn more at [pueblohealth.org/pfas](http://pueblohealth.org/pfas)





the **COOLEST** Houses

in Southern Colorado have



**15-20 DEGREES COOLER!**  
**SAVE UP TO 50-90% ON COST OF COOLING**  
**LEARN MORE [QC.SIEA.COM](http://QC.SIEA.COM) | 800-279-7432**



## Lodging ~ from the glamorous Craftsman Lodge to high mountain cabins and tents



The Craftsman Lodge

koa.com

### The Pines of Beulah:

Vacation Rental Cabins nestled in the ponderosa pines near Middle Creek. Available for overnight, weekend or multi-night stays. Visit the-pinesofbeulah.com - 8956 Grand Ave, Beulah CO 719-485-7463. *Ad p. 4*

**The Craftsman Lodge:** If you haven't been to the Craftsman Lodge in awhile, they have a few new updates and have something for everyone's taste attending that Family reunion, preparing for the perfect Wedding, or just a nice family/friends getaway. For relaxation after a fun day of hiking and biking, they have built a dry sauna with a perfect view of the glorious Greenhorn Mountain. It also has a lovely deck if you just want to sit and enjoy the view with a nice beverage. If you really want to just enjoy the outdoors with a spectacular view without

being confined by a house, there are several tent sites and a compost outhouse to set the mood (although you can use the house toilet if desired). Book the Mountain View Retreat to expand on this experience in a uniquely crafted Yurt. Perfect for that private getaway from the city or a little privacy for the married couple as they start their honeymoon.

Most people don't know about the RV site with full hook-ups available as well. So get outdoors and enjoy what the Greenhorn Valley has to offer and spend your nights glamping in luxury in the Lodge or sleeping in the outdoors on the property. Visit [www.craftsmanlodge.com](http://www.craftsmanlodge.com) or the Facebook page. 719-489-3157 or 719-989-0853

Discounts for residents of the Greenhorn Valley. *Ads p. 6 & 17.*

San Isabel area lodging includes **The San Isabel Lodge**

**and Restaurant, The Pines, and Aspen Acres.** All recently remodeling, this favorite destination has much to offer including freshly updated cabins, the San Isabel Lodge Restaurant, and easy access to Lake Isabel. The lake is perfect for all types of non-motorized watercraft. [www.sanisabellodging.com](http://www.sanisabellodging.com) 719-489-2280.

Just across the highway, **The Pines** offers cozy cabins and is also located in close proximity to Lake Isabel

**Aspen Acres** now offers full-hookup sites, cabins, outfitter tents and tent sites, and a remodeled bathhouse. The area offers hiking, biking, fishing, ATVing, dirt-bike riding, paddleboarding, kayaking, and stargazing all at 9,200 feet in the beauty of the San Isabel National Forest.

Information can be seen at [www.aspenacrescamp](http://www.aspenacrescamp)

**The KOA Kampground** is just to the east at the Colorado City/Rye exit. Featuring excellent camping and RV parking, with great views and fun events throughout the summer, the KOA is a popular spot in southern Colorado. A refurbished

swimming pool and miniature golf are available for young and old to enjoy as you get to know your fellow campers. Cabins are also available at the KOA. Call 719-676-3376 for reservations and information. Or go to Pueblo-South campground at

See Lodging p. 22



## Visit the Pueblo Riverwalk today!

# Summer Fun

### MAY-SEPTEMBER 2024

Free Live Music

Movie Nights

Pedal Boats

Tour Boat Rides

Fitness Classes

Free Events



[puebloriverwalk.org](http://puebloriverwalk.org)

@puebloriverwalk

101 S. Union Ave  
Pueblo, CO

## Spend the day on Main Street in Rye



For a community of 206 people as of the 2020 census, Rye has a beautiful Main Street at 6,828 feet above sea level. Eighty-seven households, and 52 families reside in the town. It was founded as a statutory municipality in 1937.

The Rye Post Office has existed since 1881. Rye High School began construction in 1919, and the first graduate received their diploma in 1925. And Main Street is still thriving.

**Piano Marvel** at 2090 Main St. began from the home of Aaron and Heidi Garner in 2008. In June 2016, they began renting the building that they, then, bought in August of 2016. They

teach piano and developed software that helps people learn to play the piano. They market their software to educators, individuals and piano studios. Many retired people learn to play the piano when they finally have time. If you want lessons, call Aaron at 719-252-9136 or

go to their web page at [pianomarvel.com](http://pianomarvel.com).

**Mama Bear Daycare** is located at 2101 Main Street. The daycare, according to their website, takes children for six weeks to 12 years old. They have classes taught by dedicated and experienced educators. They use proven techniques and strategies in helping students on the path to success. Owner Brooke Boisvert can be reached at (719) 489-3385, or [brooke@mamabear-daycare.com](mailto:brooke@mamabear-daycare.com). The daycare opened in 2022.

**The Work Shop** is located on 2107 Main Street. It is the perfect place for crafts, classes, parties,

meetings, game nights and much more. If you are looking for a place to meet with lots of elbow room, call Laney Dockter at (719) 334-5127 or go to [Theworkshopinrye@outlook.com](mailto:Theworkshopinrye@outlook.com).

**Mountain Blooms by Laney** is at 2109 Main Street. There you will find flowers and gifts for all occasions. Laney opened her shop in 2023 and has a large variety of flowers on hand at any given time. If you are looking for something out of the ordinary, special orders can be received within a few days. Laney can be reached at (719) 334-5127, and also has a presence on Instagram, Facebook and a website at [MountainBlooms.net](http://MountainBlooms.net). Mountain Blooms is open from 9 a.m. - 6 p.m., Tuesday thru Thursday and from 10 a.m. - 4 p.m. on Friday and Saturday.

The **Main Street Boutique** is located at 2111 Main St. It offers an eclectic selection of gift items including products from

local artists. You can contact them at (719) 489-2793. It has been in business approximately 12 years and Natalie Roles-Lepley is the owner. The business is closed on Monday and Tuesday and is open 10 a.m. - 4 p.m., Wednesday thru Saturday, and noon - 2:30 p.m. on Sunday

**Averil Marie Collections** is located at 2113 Main Street. It features custom made dresses, gowns, and bridal wear. You can reach the business at (719) 924-3636, or [ashifflet@averilmarie.com](mailto:ashifflet@averilmarie.com). It opened in 2017 and is owned by Ana-Kacia Shifflet.

**Just Cuts** is located at 2113 Suite B., on Main St. Michelle Martin opened in 2019 and does Haircuts only at \$10 for men, women, and children. She is there from 9 a.m. - 4 p.m. every Tuesday thru Friday, and don't worry

about calling for an appointment, she takes walk ins only.

**The Rye Café**, owned by Mike Peck, is located at 2115 Main St. Peck opened in 2021 and has been serving up fine food since. The motto of the restaurant is "where old friends meet and new ones are made," and Peck remains true to that calling. Everyone knows about the pizza they bake fresh but their desserts and sandwiches are popular also. Call in to (719) 489-3131. The restaurant is closed Tuesday. Sunday it is open from 11 a.m. until 5 p.m. and the other five days of the week it opens at 11 a.m. and closes at 6:30 p.m.

*For a spectacular show of what Rye has to offer, plan to attend the 2024 Town Square Fair on August 10, 10am to 4pm, Main Street. Ad p. 23*

## Buying or Selling Your Home?

**Justin and Sarah Hunter**  
YOUR REAL ESTATE PROS

Let us help you with all of your Real Estate needs! Whether buying or selling, let us help you navigate through the process. We offer a free market analysis to ensure you get the full value for your home in today's market. If you are buying your first home or the vacation home of your dreams we will be there every step of the way!

**Call to book your appointment today!**

Team House Hunter's  
with Sorella Real Estate  
Justin Hunter 719-251-4769  
Sarah Hunter 719-214-1438  
[TeamHouseHunters@otlook.com](mailto:TeamHouseHunters@otlook.com)



J.M. Tire, Inc.

928 Main St.  
Walsenburg, CO 81089  
719-738-2150

709 N. Commercial  
Trinidad, CO 81082  
719-846-7273

1260 Brilliant Ave.  
Raton, NM 87740  
575-445-7675

We are your Full Service Automotive and Tire Store. We sell custom wheels, Goodyear, Cooper, Hankook, Kelly, National, BFG, and we have access to other brands as well. We will give you the best deal, with the best quality, for the best price at all three locations.

### Hours of Operation

Monday-Friday  
8:00 AM - 5:00 PM  
24/7 TOWING SERVICE  
719-859-4282

### Car Rentals Available

- Economy Cars
  - Caravan
  - SUV's
  - 12-15 Passenger Vans
- Daily, Weekly & Monthly Rates

### Shop Services

- Diagnostics
- Alignments
- Tire Mount/Balance
- Semi & Farm Tires
- Oil Change & Tune-up
- Shocks & Struts
- Exhaust Replacement
- Transmission & Clutch Replacement
- Mobile Tire Service
- 24 Hour Towing Service
- Lockouts
- Fuel Delivery
- Tire Change
- Accident Recovery



**BRING IN THIS AD AND GET FREE ALIGNMENT CHECK ON A SET OF 4 TIRES PURCHASE OR 5% OFF AN OIL CHANGE**



Wendy Lujan, AVP  
Mortgage Loans Officer  
NMLS# 2317538  
Pueblo Branch

Don't trust your biggest investment to a website.

Your loan officer is also your neighbor.



We're a community bank. We don't see customers; we see neighbors. So, when it comes to looking for a home loan, wouldn't you rather be treated as a neighbor than just another customer?



**FRONTIER BANK**  
NMLS# 405272

Pueblo

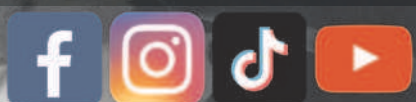
4115 Outlook Blvd. Pueblo, CO 81008 (719) 296-1225  
www.frontierbankco.com



# Waddle on into the



OPEN YEAR ROUND  
Located in Pueblo City Park  
3455 Nuckolls Ave  
pueblozoo.org



## Fishing at the high mountain lakes nearby



San Isabel Lake

The two obvious choices for fishing are Lake Beckwith in Colorado City, and San Isabel, further up highway 165. Lake Beckwith has something for everyone in that there is a wide variety of species available. For the warm-water fisherman there are Largemouth Bass, Crappie, Perch, Saugeye (Sauger and Walleye hybrid) and catfish, as well as stocked rainbow trout, and wild brown trout.

There is deep, rocky bottom off of the dam, and a nice shallow shelf where the boat ramp is located. Throughout the lake there are areas where there are submerged brush piles which make excellent structure for large bass and other predatory fish. This makes it an excellent location for any type of fisherman, whether it be a fly-fisherman, bait fisherman, or working structures with a spinning rod. Boats are allowed on the lake as well as electric motors. This is a technique I like to use, in order to reach locations that the shoreline fisherman cannot.

San Isabel is also an excellent location. It does not have the variety of species that Lake Beckwith has, but makes up for it with an abundance of trout. It has

lots of shoreline access, for bait, spin and fly-fishermen alike. Rainbows and/or Cuttbow Trout are stocked frequently, as well as wild Brown and Brook Trout. Fish are taken with a wide variety of techniques. Bait fisherman tend to do well with a variety of options including worms, salmon eggs and power-bait. There are a lot of spinners that work well too.

Kastmasters are always a good option, as well as 1/8 ounce Krocodiles, Jakes Spin-A-lure, and Panther Martins. Another great

the wild Brown Trout patrolling there, and have an opportunity for some of the bigger fish.

There are a number of small streams around here for those willing to do a little walking and a little bit of bush whacking. The key to success on these smaller fast moving streams is to make a stealthy approach, using some of the brush to break up your outline. Rainbow's and Brown trout are found at the lower elevations and can be had on just about any type of well presented fly. But as you work your way

technique is to fish a wet fly like a Pistol Pete or Woolly Bugger behind an Adjust A Bubble. My personal favorite technique is to get out on my float tube, and cast a double dry fly rig, towards the shoreline. Often, I can find some of

upstream you will find fewer Rainbow Trout, and more Brook Trout. Finally as you get near the upper reaches of the streams you can get into some Greenback Cutthroats as well. Check the fishing regulations manual before you fish these.

Finally, Blue Lakes, at the top of Greenhorn Mountain have had a very healthy stock of Cuttbow and Rainbow trout. They are a little bit bigger than the stockers found in Lake Isabel and Beckwith, and

are a bit more finicky as well. Blue Lakes are located at the end of Ophir Creek road at the very top of Greenhorn Mountain, with one of the prettiest camping spots around.

Fish there are caught using a variety of standard techniques. My best advice here is to bring different options, so you can find the one that they are biting on. It's one of my favorite places to camp out and hopefully cook a couple of fresh trout while I am at it.

**EAT HEALTHY GRASSFED BEEF**  
FROM RYE, COLORADO



**HAPPY CATTLE, HEALTHY BEEF**  
USDA Certified & Processed

Quarter of a Beef \$1155 Side of a Beef \$2052  
Whole Beef \$3850  
25lb Premium Sampler Beef Box \$355  
25lb Ground Beef Box \$9.89lb  
Includes processing in vacuumed sealed packaging  
**(719) 252-5973**  
[www.CurtisRanch.net](http://www.CurtisRanch.net)



At SRDA, our Senior Medicare Patrol (SMP) are ready to provide you with the information you need to PROTECT yourself from Medicare fraud, errors, and abuse; DETECT potential fraud, errors, and abuse; and REPORT your concerns. SMPs are trained to help educate and empower Medicare beneficiaries in the fight against health care fraud. Our SMP's can help you with your questions, concerns, or complaints about potential fraud and abuse issues. Call SRDA at 719-583-6611 for more information.

## Don't miss the Graneros Gorge



Under Parks and Recreation the Graneros Gorge, approximately 20 acres, is designated for citizens of the Greenhorn Valley, Pueblo County and all visitors to our area. Many

types of recreation are prescribed such as picnic, biking, hiking, horse back riding, photographs or walking. The site is listed in the Frontier Pathways Scenic and Historic Byways publication.

The Gorge is located on the east side of Interstate Highway 25 at exit 71 south of Colorado City. There is signage indicating you are close to the entrance. At the sign turn north proceeding .3 mile on frontage road then turn east through barbed wire

fence opening. The road is not maintained so beware of pot holes and ditches. At .3 mile the road will fork. Take the fork on right and follow it for about .6 mile. It will come near the edge of gorge and you will reach a connecting dirt road (well traveled) that goes to right for .2 mile. Turn right and park. Walk a hundred yards south towards gorge and you will see the remains of a gazebo built in the thirties situated on the very edge overlooking the gorge.

The view is awesome and breathtaking. It gives you pause to ponder Mother earth's magical spirits that are present.

The Graneros Gorge is documented as a prehistoric site (Bellwood site AD 395-505, Wikipedia) and also listed in the Pre-Historic Site List in Colorado.

Discoveries by archaeological digs indicate early indigenous inhabitants were of the

"woodland and plains culture" and frequented there before 1250 AD (Prof Arnold Withers of Denver). There is speculation that the skeletal remains of the great Comanche Chief Cuerno Verde (Greenhorn) may have possibly been unearthed in what is believed to be an old Indian burial ground. Documented verification is ongoing. The site has more than likely been visited by Ute, Kiowa, Apache, Comanche and various military expeditions both Spanish and American over the centuries.

Also for the delight of visitors, there is an abundance of wildlife. Depending on the season and human traffic you may be fortunate to encounter antelope, deer, bear, squirrel, chipmunk, lizards, snake, bobcat, mountain lion, hawk, falcon, eagle both Bald and Golden. The cliff edge is ideal for the vulture and bird of prey to draft on air currents

rising from the bottom. Bring along a pair of binoculars to observe these creatures riding the winds.

When exploring the rim of gorge use caution, there are loose rocks and boulders and falls have occurred. Take your time. Also there are plenty of cacti: Prickly Pear, Ball, Cholla, and spiked yucca. Boots are recommended.

As you weave and wander among the rocks you are bound to come across ancient dwarfed Cedar Trees hugging crevasses or hanging precariously between giant sandstone boulders about to tip into the gorge.

Hiking down into the gorge, however, is not recommended for it is privately owned and trespassers will be prosecuted. Parks and Recreation advises you not to litter and to take all trash out with you when you leave.



**(719)542-6910**

**1731 Erie Avenue  
in Pueblo**

**southerncoloradorecyclers.com**

**● Portable Toilets**  
Construction ~ Special Events  
~ADA

**Handwash Stations ~ Residential**

**● Recyclables**

**● Paint**

**\$7 - 11 per gallon**  
with many colors to choose from



## The St. Charles River hiking trail



great place to explore the variety of wading pools along the way. Many of the pools are foot-friendly with soft gravel bottoms, but water shoes will make the day even better.

Pack a lunch or grab a sandwich at the Lodge and follow the boat ramp down to lakes edge; at the ramp go right and follow the sunny path around the lake to the west.

As you reach the west edge you will find a trail leading into the forest to your right.

Continue up through the park until you hear the river just in front of you and stay to the right of the river. The trail will end and require an easy cross of the river about 500 feet in, with the trail picking up again on the other side of the river.

From this point, let the kids (or the dog) pick the path, and the wading pools. The cool water will get plenty of attention but the length of the trail to several well-placed picnic tables is short so there is no need to hurry.

Two footbridges will cross the river along the way and both sides of the river offer clean picnic spots and include fire pits at some points.

Near the top of the trail, watch for a beautiful natural staircase worth several

photos. There is also a nearly waist deep pool at this point which may easily become your destination for the day.

You'll take dozens of pictures on the short hike from the western edge of San Isabel Lake, up the St

Charles River, and through the picnic area.

This shady hike is easy enough for children and a

the west edge you will find a trail leading into the forest to your right.



The Craftsman Lodge  
10950 Bartlett Trail  
Rye CO 81069

Phone: 719-489-3157 (Lodge)  
Mobile: 719-989-0853  
E-mail: [craftsmanlodge@gmail.com](mailto:craftsmanlodge@gmail.com)  
Web: [www.craftsmanlodge.com](http://www.craftsmanlodge.com)

Catherine M. Blanton  
Owner/Operator



## We're on a mission to:

Make outdoor recreation more accessible for all Colorado City residents!

Learn more about our work towards revitalizing Greenhorn Community Park and how you can help at:

[valley-first.org](http://valley-first.org)

## The historic Marion Mine trail

The hike to the Marion Mine starts by going up the Cisneros Trail starting at the back end of the St. Charles campground at Lake Isabel. There is a \$6

day fee to get into the area, although you can park in the San Isabel area and walk to the trailhead. Even in 80 degree and sunny weather, it is always a

good idea to take rain gear. Rain showers are common and can leave a hiker in danger on a shaded hike. The rain showers and year-round deep shade from surrounding rock formations also add interesting variety to the foliage, as Oregon-like ferns and mosses are abundant at the higher areas.

The hike is mostly in trees with the sun occasionally peeking through. About 10 minutes into the hike it gets steep and stays that way for about ten minutes. Not a long time but



definitely a test of your hiking lungs at higher elevations.

After half an hour you enter an area with tall aspen lining both sides of the path. After spending about ten minutes here you come to a sign where the trail splits. If you go left you stay on the Cisneros trail. We went straight ahead toward the Marion Mine.

The trail gets steeper again at the 45 minute mark. The rock wall on the right is impressive and you can hear water to the left side of the trail. A few minutes later you come to a small cabin on private

property right on the stream. What a place to spend the night. The trail then steepens again at this point.

Approximately one hour into the hike you come to the Marion Mine. The shaft is covered to keep people out and of course it is in disrepair, but you can certainly see why it is located there.

Cross the small stream near a small waterfall and take a left along a huge rock wall. Ferns grow out of the rock wall and you find the cool, clear waterfall.

**Days Inn**  
by Wyndham  
Under New Ownership

make a reservation and visit the beautiful  
**San Isabel National Forest**

Discounted Rate for Local Reservations

Ruth Griffith, General Manager  
**719-676-2340**  
daysinn11777@gmail.com

**MOUNTAIN DISPOSAL**  
EST. 1989 INC

- ✓ Residential Service & Dumpsters
- ✓ Construction Roll-offs
- ✓ Special Pickups
- ✓ Portable Toilets
- ✓ Special Event Packages

**MOUNTAINDISPOSAL.COM • 719-489-3456**  
**P.O. BOX 20230 • COLORADO CITY, CO**

**U-Haul**  
**Under New Management**  
**Boxes & Accessories**

**719~**  
**676~2456**

See us for  
all of your  
moving  
needs

**4708 W. Graneros Rd - Colorado City**  
**uglassrye@gmail.com**

## Discover the natural waterslide below San Isabel Lake

The hike from San Isabel Lake down to the Natural Water Slide is one of the most enchanting in the San Isabel Recreation Area. The trail combines soft-pine-needled shade with sun-dappled-Aspen-grove meadows, and an occasional rock scramble.

At 8,500 feet, this area drops approximately 15 to 20 degrees in temperature from the temp in Pueblo, so bring along a sweatshirt. Although my daughter has made the hike in flip flops, sturdy shoes are advised because this easy hike offers rock-hopping at the river's edge. Keep the season in mind as spring means higher, colder water with less people at the slide, while summer will bring warmer water with more people. Although the round-trip hike takes just over an hour, allow time for the deep cool pools, water slide, and abundant flat rocks for sunning.

After a short drive on Hwy 165, at mile marker 19 cross

the San Isabel dam and find parking to the left.. Cross the highway and find the trail-head beside the spillway from the dam. This is the steepest part of the hike and is approximately 100 feet from road to river's edge where the trail flattens and meanders nicely.

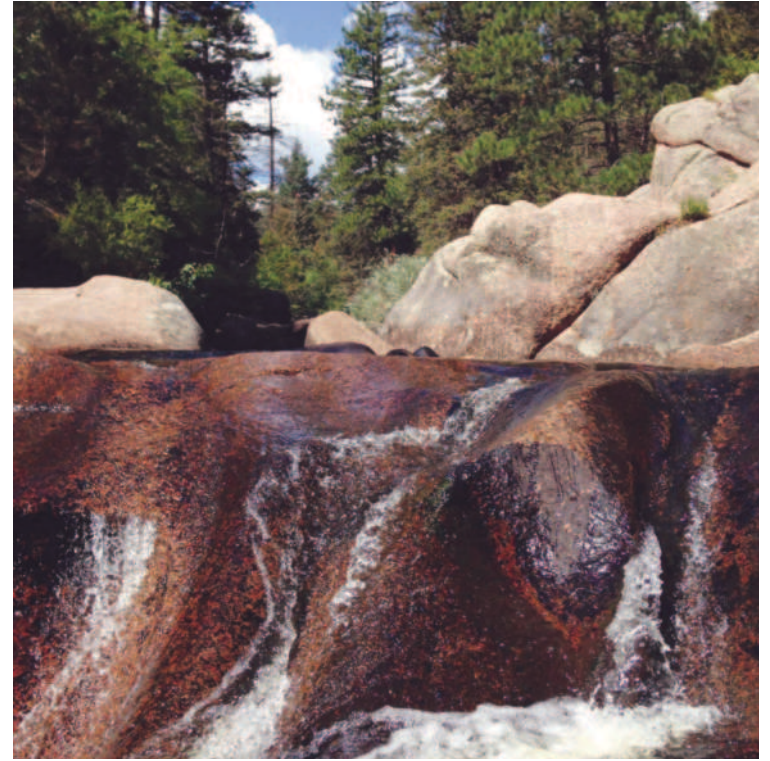
Continue downstream just to the left of the river. Five minutes in, enter an Aspen grove meadow swerving slightly away from the river. On return the trail enters the river for the first time via well-placed rocks just along river's edge. A slight loop up an over the rocks follows and then coming back to the river you find a pool adequate for soaking on a warm day. (This is not the water-slide)

Continue along the pine needle cushioned trail with a nice mix of sun and shade. At about 20 minutes in, you find a second deep pool area with large, flat sunning rocks. (This is not the water-slide)

At approximately 25 minutes in, a rock shelf will cause the trail to loop up slightly away from the river. This point also offers a stunning view of the rock wall down river. Shortly after this loop, and back at river's edge, you will cross the water's edge by stepping across rocks to a beautiful waterfall and deep pool at the trail's edge. (This is not water slide)

The trail becomes more and more part of the rock canyon. Take your time, as the rocks can be slippery. Another large pool is found at this point. (This is not the water slide)

As you continue downstream and then at just about 35-40 minutes in, you turn a corner to find a nice opening in the rock where you can see a smaller upper pool with a water slide to the larger pool below. This area is surrounded by large flat rocks and towering rock wall. Most stop here, as this is the Natural Water Slide, but if you do



venture further you will be delighted to find an even larger waterfall just beyond. This fall is only for viewing however and can be enjoyed from several secluded rocks. After relaxing in sun cool

pools, follow the same route up and out of the canyon. Enjoy the last chance to get your feet wet as you cross the river and head up the very steep, but thankfully short, hike to the road.



Sunday-Thursday 11 am - 9pm  
Friday-Saturday 11 am - 10 pm  
8900 S Interstate 25  
Colorado City, CO 81019 (Exit 74)

719-676-2440  
highoctanebbq.com



**We Smoke**  
*Nothing*  
**But The**  
*Best!*



**MENU**



**WEBSITE**

## An enchanting trip to Bishop's Castle

Located on Highway 165 in the Wet Mountains about five miles north of San Isabel, Bishop's Castle was begun in 1969, and for 40 years, Jim Bishop has been building the castle in the mountainside, himself.

Bishop estimates that every year since then he has gathered and placed over a 1000 ton of rock a year.

Visitors can climb steep steps or they can enter from behind to the second floor. The grand ballroom is one of the most impressive features. Unique pieces of stained glass decorate the windows. A dragon sits atop one of the towers and a balcony surrounds large portions of the castle.

The entire sight is free although donation jars are available. The site is open

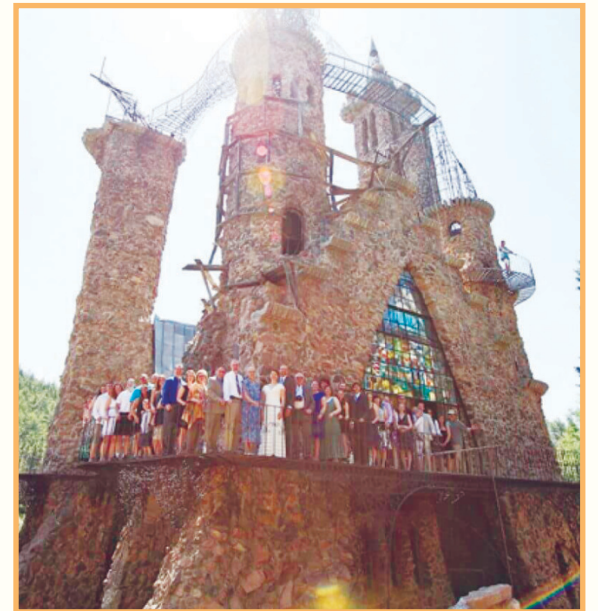
seven days a week from

According to *Roadside-america*, "for most" of the 40 years he has worked on the castle "Bishop was engaged in a running battle with Washington bureaucrats over the rocks that he used," which came from the National Forest surrounding his property.

"Bishop felt that they were his for the taking, the government wanted to charge him per truckload." That dispute has been settled. In

1996, he was challenged by the local and state government over unsanctioned road signs that pointed to the site. They settled the dispute by issuing official road signs.

The site is now described as a medieval, fantasy construction.



**Marquis** 

**PAINT & BODY**

4th Generation Family Owned Business

Walk-In Estimates Welcome  
All Paint & Body Repairs  
Hail Damage Repair  
Big or Small, we do it all!



Marquispaintbody@gmail.com  **719.544.0114**  
311 Lamkin Street  
(Off of C Street,  
Downtown Pueblo)

[www.COTWrealestate.com](http://www.COTWrealestate.com) | (719) 742-3626 | [info@COTWrealestate.com](mailto:info@COTWrealestate.com)

La Veta Office  
215 South Main Street | La Veta, CO

Walsenburg Office  
502 Main Street | Walsenburg, CO



Trinidad Office  
431 University | Trinidad, CO

Aguilar Office  
120 Main St. Suite A | Aguilar, CO



2340 Bennett Rd. Walsenburg, CO  
Listing Price \$1,150,000

Turn-Key Colorado State-of-the-Art Grow Facility

Sits on 35 acres, with 4.5 acres being completely fenced and compliant with Colorado MED security requirements. This is a unique opportunity to begin operations immediately. Current State Cultivation License /County Use Permit are transferable.



730 Peak View Rd, Rye, CO  
Listing Price \$888,000

5 Bedrooms | 4 Bathrooms | 3,946 Sq. Ft.

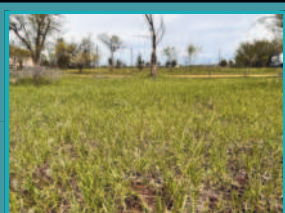
Introducing Peak View Ranch! Nestled in Southern Colorado between Walsenburg and Colorado City, this gem sits conveniently on the west side of I-25, ensuring easy access all year round. This exceptional property boasts a Custom Home with a spacious Shop, Bunkhouse, and a charming courtyard complete with a concrete basketball court. Every detail has been thoughtfully designed, from corrals and a chicken coop to a flourishing garden and ample storage sheds. Fully fenced and privately sectioned around the residence and shop, it offers both security and serenity. One of the standout features of this property is its impressive well, complete with a cistern and sunken pump house, ensuring a reliable water supply year-round. The only thing missing is you, your loved ones, and your beloved animals. Don't miss out on the opportunity to make Peak View Ranch your own slice of paradise!



Our team of local area specialists resides within the Colorado City/Rye community, focusing on Residential, Commercial, Vacant Land, Farm and Ranch Properties, and Property Management services!



TBD Austyns Bluff Ct.  
Lot 25, Rye, CO  
35+/- Acres  
Listing Price \$69,900



TBD Fort Crockett Ave  
Lot 19, Colorado City  
0.23 Acres  
Listing Price \$12,000



95 & 96 Sikes Ranch,  
Rye, CO  
80+/- Acres  
Listing Price \$79,500

## Plan to attend the annual Mountain Aire festival this summer



The Annual Mountain Aire Festival, dinner and auction will be held on Saturday, July 13th, beginning at 4pm. As it has been every year since 2001, it will be held at the Christenson's Brush Canyon Ranch, three miles up on the Old San Isabel Road

above Rye.

The menu is a choice of steak or chicken, with side dishes of baked potatoes, bread rolls, watermelon, salad, and homemade desserts.

An auction, with beautiful handcrafted items such as quilts, woodwork, pic-

ture frames, pottery will begin after dinner. One of the items is the "Dessert a month for a year". Many new items and certificates are donated by the businesses and residents, as well as, old pictures of Rye and other historical sights in the area.

All proceeds after costs go to the outreach and mission work of Faith Circle which has been active in the Rye/Colorado City communities for many

years. The Festival is their biggest fund raiser of the year—hope to see you all there.



Vacation Bible School  
Valley Community Church  
July 22-July 26

Ages PreK-5th grade  
Register at

[Vbspro.events/p/valleycommunitychurch](https://vbspro.events/p/valleycommunitychurch)  
Questions call: 719-676-3830

## Check out these activities At the Susan Kalman Community Center

Fitness and Craft Classes  
Complimentary Lunches from SRDA  
Monthly Food Pantry and more!

[volunteersforcommunity.org/events](https://volunteersforcommunity.org/events)



Learn more and get involved today!



Aspen Acres Campground

**Lodging**  
Continued from p. 12

ground.com 719-485-3275  
**The Day's Inn Motel** offers fully remodeled rooms and a pool with a fabulous view of the Greenhorn Mountains. Conveniently located just off I-25 and Highway 165, with easy access to the San Isabel National Forest. Accommodations include a lounge and Japanese restaurant. 719-676-2340. *Ad p. 18*  
 Local residents are offered a discount for reservations.

**The Ophir Creek Campground** is located about 48 miles southwest of Pueblo, eight miles north of Lake Isabel. This campground is situated along Squirrel Creek at an elevation of 8,900 feet. There are 31 campsites in the campground. Twelve are back-in campsites suitable for small RVs. The remaining nineteen are walk-in tent sites. Each campsite has a picnic table and fire grate. Some of the sites are in an open meadow while the rest

are shaded by spruce and aspen trees. This area is very pretty, especially in the fall and it is a great place to tent camp. Reservations are not accepted. Open May through mid October  
**Activities**  
**FISHING:** Fishing is available in Ophir Creek, Lake Isabel and St. Charles Creek.  
**HIKING:** Hiking is available on the Second Mace, Squirrel Creek, Silver Circle, Dome Rock and South Creek trails.  
**BIKING:** Biking is available on the Second Mace, Squirrel Creek, Silver Circle, Dome Rock and South Creek trails.  
**MOTORIZED TRAIL RIDING :** ATVs are permitted on the Second Mace, Squirrel Creek, Silver Circle trails. Ophir Creek Road  
 From the campground follow Ophir Creek Forest Service Road #360 12 miles, then turn left on Greenhorn Forest Service Road #369, which continues another 13 miles. Trailheads along this road include the Cisneros, 9 miles in on FSR# 369, Pole Creek, and the western trailhead of Barlett Trail at nearly 17 miles along #369. From the origin at the Ophir Campground to el-

evations above 11,000 ft., witness a beautifully changing variety of wildflowers culminating with abundant purple Wild Lupine scattered among the deep forest green of towering Poderosa Pine.  
 For the very determined, continue on FSR #369 and spend the afternoon fishing in the remote and peaceful alpine lakes at 11,220 feet.  
**Greenhorn Meadows Campground-**  
 Located on highway 165, just a few miles from from the I-25 exit. The campground has 15 RV sites with electricity and numerous tent sites, city water, full shower and bathroom facilities, a gazebo and a cave if you can find it!  
**St. Charles Campground-**  
 Located about 40 miles southwest of Pueblo near Lake Isabel, the elevation is 8,800 feet. Fifteen campsites suitable for both RVs and tents. About one mile to Lake Isabel from the campground. No hookups for RVs. Ten of the campsites are reservable and five available on a first come/first serve basis.  
 The campground is one of three in the San Isabel Recreation Area. Firewood is available for a fee. The nearby community of San Isabel offers limited groceries, paddle and rowboat rentals and a small restaurant for a cooks night out.  
**Hiking-Snow Slide Trail - 5 miles/Cisneros Trail - 15 miles**  
**Fishing-Brown and Rainbow trout in the reservoir and Brook trout in the St. Charles headwaters. Open Memorial Day through Labor Day weekend.**  
**Directions-From Colorado City, CO, take State Rt. 165 west 12.2 miles to San Isabel Recreation Area sign. Turn left at sign and go 1.1 miles to campground sign.**

Turn left at sign and go 0.3 miles to another campground sign. Turn right at sign into campground.  
**La Vista Campground**  
 La Vista Campground is a developed campground with the following activities: hiking, fishing, and boating. At Lake Isabel, activities include non-motorized boating and fishing. St. Charles Creek is close to the campground and may be fished. Access to motorized and non-motorized trails including Cisneros, St. Charles, and Snowslide. From Colorado City travel west 18 miles on state Hwy 165. Turn into the south entrance at Lake Isabel, go about 1 mile and look for the La Vista campground signs. Located in South Central Colorado 43 miles southwest  
**Davenport Campground-**  
 Davenport campground stretches along Squirrel Creek among spruce and Aspen at an elevation of 8,500 ft. Widely spaced sites provide a spacious feeling and privacy. The camp ground is primarily for tent camping, Hiking-Squirrel Creek Trail #1384 (foot, horse, mountain bike & dirt bike) - 4.5 miles, Second Mace Trail #1322 (foot, horse, mountain bike & dirt bike) - 7 miles  
**Fishing-Brook trout**  
**Directions-From Colorado City, CO, take State Rt. 165 west 18.2 miles to campground sign (Forest Rt. 382). Turn left at sign onto Rt. 382 (dirt, single-lane with turnouts) and go 1.4 miles to campground.**



**NEW TO PUEBLO AND SURROUNDING AREAS!**

Introducing BodyTite and Facetite - the revolutionary body contouring solution that combines radiofrequency-assisted lipolysis with skin tightening technology. It is an innovative alternative to surgery for body contouring and fat reduction.

Say goodbye to stubborn fat and hello to a smoother, more sculpted you!

Contact us today, lets get you looking and feeling your best!  
[www.eehealthspa.com](http://www.eehealthspa.com)

**BRANDI OLSON FNP-C**  
**2501 KACHINA DR. PUEBLO, CO 81008**  
**719-569-4770**



**BAM BAM FIREARMS & SPORTING GOODS**  
**GREG COLLINS OR DAVID WEAVER**  
**719-406-1038**  
 2031 COLUMBIA DR., PUEBLO, CO 81005 | [BAMBAMFIREARMS@YAHOO.COM](mailto:BAMBAMFIREARMS@YAHOO.COM)  
[WWW.BAMBAMFIREARMS.COM](http://WWW.BAMBAMFIREARMS.COM)



**Hiking**  
Continued from p. 6

Elevations: start 8,940', high point 11,220', end 11,220'

This trail rises from Lake Isabel into the heart of the Wet Mountains. It winds through gorgeous country alternating between heavy forest and open parks. Lots of wildlife and great wildflowers.

About three-quarters mile from the Lake Isabel Campground is a trail junction with the St. Charles Trail. St. Charles Trail will take you north onto St. Charles Peak (11,784') while the Cisneros Trail turns left and heads southwest towards Greenhorn Mountain (12,347').

Access: The upper trailhead: From State Highway 165, turn west at Ophir Creek Forest Service Road #360. Go about 12 miles and then turn left (south) on the Greenhorn Mountain Road #369. Go another 17 miles to the end of the road at the edge of Greenhorn Mountain Wilderness.

The lower trailhead: Go through San Isabel around to the west end of the Lake to the upper campground. The Trail begins on the west end of the campground. USGS Maps: San Isabel

**Greenhorn Trail #1316**

Length: 7.8 miles, Rated: moderate, Use: summer and fall; hiking, horseback riding  
Elevations: start 7,460', high point 12,000', end 11,340'

Although the summit just nudges above the timberline at 12,347 and only ranks as the 1,107 highest peak in the state. There isn't a higher mountain for over forty miles. So Greenhorn's summit provides a wonderful 360 degree view. The endless vista of the

Great Plains makes up the views to the east. The spectacular and rugged looking Sangre de Cristo Mountains dominate the view to the west. Looking south the Spanish Peaks with their twin looking summits rule your vision, and Pikes Peak makes its appearance to the north.

Access: The upper trailhead: Take SR 165 to Ophir Creek Forest Service Road #360. Go west for about 12 miles and then turn left on Greenhorn Mountain Road, go 17 miles to the parking area at the end of the road.

The lower trailhead: Turn left into Rye off highway 165 onto Main Street. It becomes Park Road. Veer right at the Y in the road veer onto Cuerno Verde Road. The road heads west and then south. After 1.6 miles there will be a small parking lot with a bridge crossing over Greenhorn Creek. This is the trailhead. USGS Maps: Rye, San Isabel

**Snowslide Trail #1318**  
Length: 5.7 miles, Rated: moderately difficult, Use: summer and fall; hiking, horseback riding. Elevations: start 8,720', high point 11,500', end 11,500'

This trail climbs slowly up a ridge to the south of the Lake Isabel Recreation Area. This is pine and aspen country with great views and lots of wildlife. Bring lots of your own water.

Access: The lower trailhead is about 8 miles northwest of Rye on State Highway 165. To reach the upper trailhead take SR 165 to Ophir Creek Forest Service Road #360. Go west for about 12 miles and then turn left on Greenhorn Mountain Road #369, go 17 miles to the parking area at the end of the road. USGS Maps: San Isabel

**St. Charles Trail #1326**  
Length: 7 miles, Rated: moderately difficult, Use: summer and fall; hiking, horseback riding. El-

evations: start 9,200', high point 11,200', end 8,200'

From the northern trailhead, the St. Charles Trail works its way up to the west and wraps around the western edge of the St. Charles Peak summit "block" before heading south. The trail follows Beaver Creek for a short

distance before rising again and crossing the ridge into the Amethyst Creek drainage, which it follows down to the lower trailhead. This is a beautiful hike through a lush aspen and pine forest with great views. USGS Maps: St. Charles Peak

**SAVE THE DATE**  
**2024 Town Square Fair**  
**Saturday, August 10, 2024**  
**11am to 4pm**  
**Main Street, Rye**



**Now Booking Food Trucks - VENDORS - ARTISTS**



Contact Jocelyn Ensley 719.489.2011  
rye.town.clerk@gmail.com



At SRDA we offer free, in-person help from our certified Connect for Health Colorado enrollment experts. Our certified Enrollment Assisters can help you apply for financial help and are very experienced with complicated situations, such as when one family member receives Health First Colorado or other public assistance while the others do not. Our Assisters can also provide education about affordable health insurance and help you enroll in a Marketplace plan.

For more information Call SRDA at 719-583-6611.



**Pueblo**  
Community College

**New students:**

**Get one**

**FREE class**

**Get 3 free credits with PCC's 3 on Me offer  
that covers up to \$500 in tuition**

- Get the degree **without the debt**
- Pay **one-third the price** of a four-year university
- Get **real-world skills and knowledge**
- Remote and online options with **PCC Flex**

**Fall classes start Aug. 19**

**LEARN  
MORE**

Call or text **719.549.3200**  
Visit **pueblocc.edu**